

# CIDISK™ PRO

## User Manual

V6.x



CIDISK KOREA, INC.

# Index

<b>Introduction</b> .....	4
Summary.....	4
System Requirements .....	5
<b>Installation / Uninstallation</b> .....	6
Installation.....	6
Uninstallation.....	9
<b>Create STEALTH</b> .....	11
Create STEALTH partition.....	11
Create STEALTH space .....	15
<b>Delete STEALTH</b> .....	19
Delete STEALTH space .....	19
Delete STEALTH partition .....	21
<b>Use STEALTH Explorer</b> .....	24
STEALTH Explorer.....	24
Ribbon menus .....	24
Caption bar .....	24
Desktop space.....	25
STEALTH space.....	26
Status bar .....	27
Connect a STEALTH by dialog.....	28
Connect a STEALTH by Digital Key .....	30
Disconnect STEALTH .....	32
Backup Digital Key .....	33
Show in the list.....	35
Folder.....	37
Parent Folder .....	37
New Folder .....	37
Refresh.....	38
Delete .....	38
Clipboard .....	39
Paste .....	39
Cut.....	40
Copy .....	40
Select all.....	41

STEALTH Features .....	42
Autolock Setting.....	42
Change Password .....	43
STEALTH Property .....	44
Format STEALTH .....	45
Favorites.....	46
<b>Usages of STEALTH Explorer .....</b>	<b>47</b>
Drag & Drop .....	47
Drag & Drop from outside to STEALTH Explorer .....	47
Drag & Drop from STEALTH Explorer to outside .....	48
Drag & Drop between STEALTH spaces .....	49
Save As.....	51
<b>Connect STEALTH File Server .....</b>	<b>53</b>
STEALTH Server Connections .....	53
Connect .....	54
Disconnect.....	55
Modify account.....	56
Operation Logs.....	57
Search .....	57
Export Logs to Excel Document.....	59
<b>Contact .....</b>	<b>61</b>

# Introduction

## Summary

CIDISK™ PRO is a brand new disk security software product of personal and enterprise customers based on **“Storage System Having Security Storage Device and Management System Thereof”** technology which is patent granted in the United States and Korea.

This document explains about CIDISK™ PRO for personal usages and STEALTH File Server for building safe file servers in a company doing small businesses.

CIDISK™ PRO provides new concepts of information security and allows users to protect and keep important files perfectly from various cyber-attacks of hackers. The followings are major features of CIDISK™ PRO.

- CIDISK™ PRO protects important files 100% safely from any kind of malware attacks including Ransomware.
- CIDISK™ PRO does not need to be updated like traditional Anti-Virus programs.
- CIDISK™ PRO protects valuable user data even though users lost their disk device.
- No one can access to the data kept in the STEALTH space without valid authentication.
- CIDISK™ PRO provides the STEALTH Explorer as a bundle to users for their conveniences to use the STEALTH space in a secure manner.
- CIDISK™ PRO supports to open the maximum 128 STEALTH space at the same time.

CIDISK™ PRO also provides following features when it is used with STEALTH File Server together.

- Connects to a remote STEALTH space shared by the STEALTH File Server.
- Protects important files on the server 100% safely from any kind of malware attacks including Ransomware even though a root privilege of the server has hijacked.
- Provides easy ways to manage the STEALTH space, Users, Shares, Access Policies and Logs of the server.
- Provides safest and easiest ways to exchange important data onto local STEALTH space and remote STEALTH space.

# System Requirements

CIDISK™ PRO's system requirements are as follows:

- Operating System: Microsoft Windows 7 or Higher(32bit, 64bit)
- Memory: Minimum 1GB (Recommended: 2GB or Higher)
- Disk Free Space: Minimum 100MB (More free space required for creating a STEALTH space)

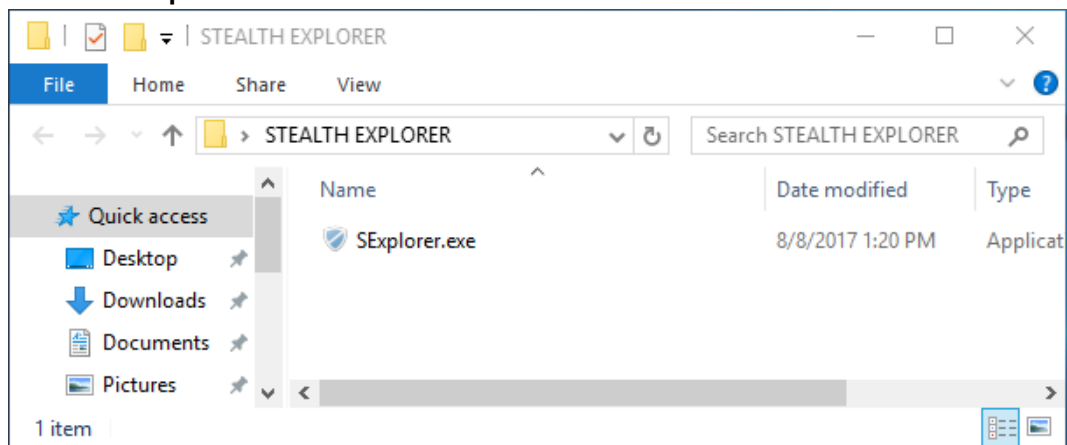
# Installation / Uninstallation

## Installation

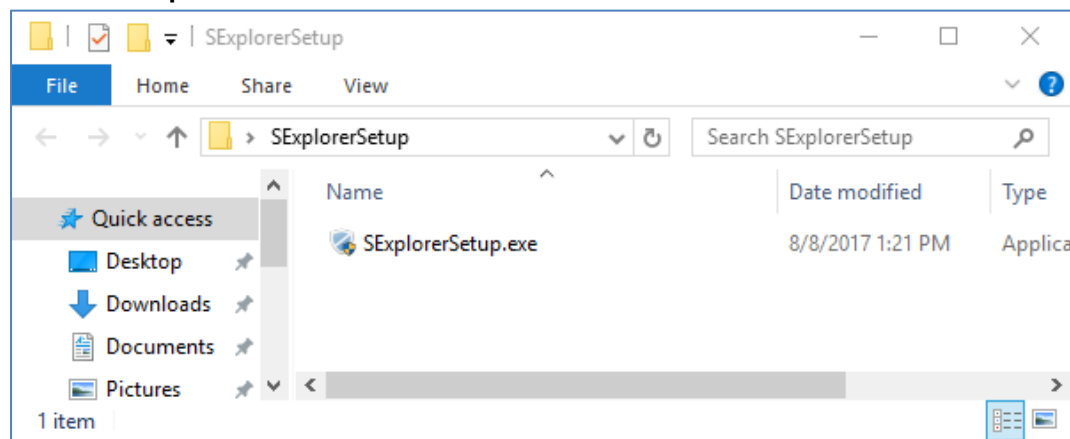
Installation of CIDISK™ PRO can be done by executing “**SExplorerSetup.exe**” provided by the CIDISK.

※ CIDISK™ PRO also provides a stand-alone executable named “**SExplorer.exe**” for using without installation.

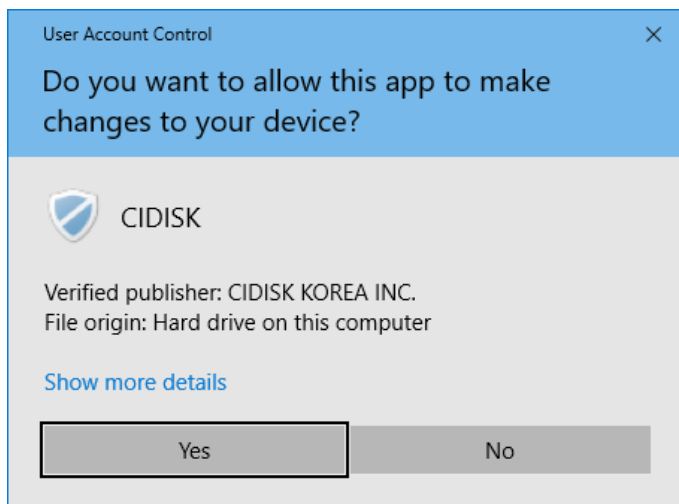
### STEALTH Explorer stand-alone:



### STEALTH Explorer Installer:



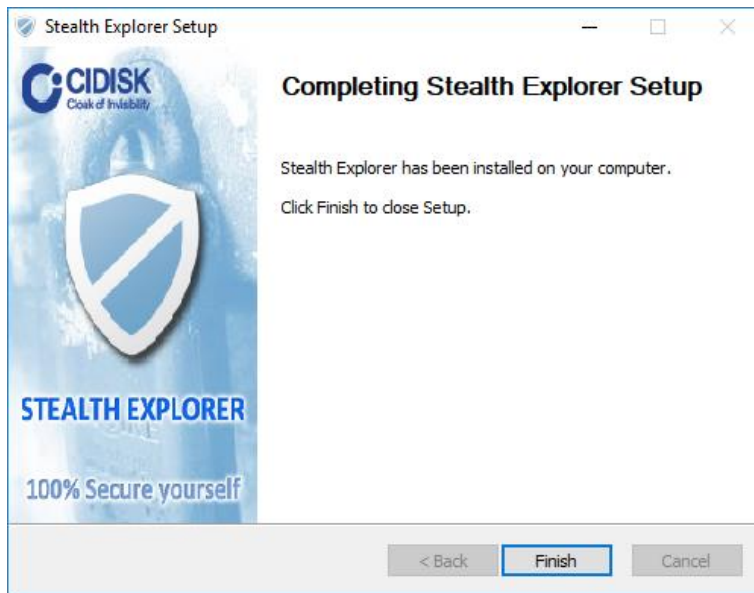
Execute the “**SExplorerSetup.exe**” by double-clicking. The following dialog will be displayed if the User Account Controls is enabled on your computer. Click “**Yes**” to allow executing with administrative rights.



The installer will be launched and “**Stealth Explorer Setup**” dialog will be displayed as follows.



Click the “**Install**” button to continue so that the installer will install necessary files into your computer. Please wait a while. Once the installation completed, the following dialog will be displayed.

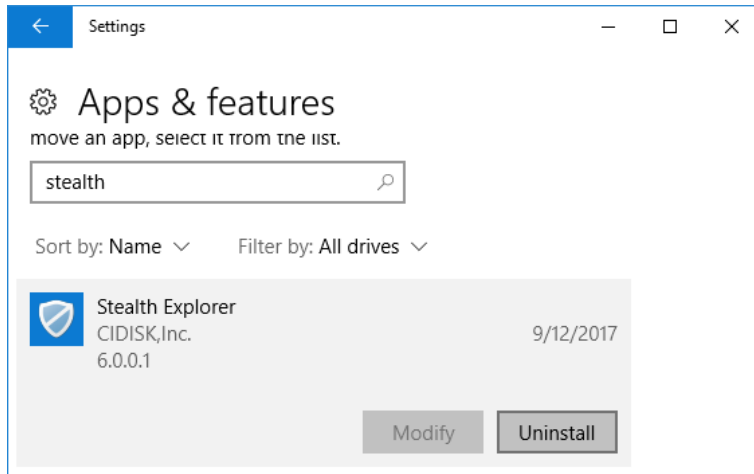


Click the **"Finish"** button to complete the installation.

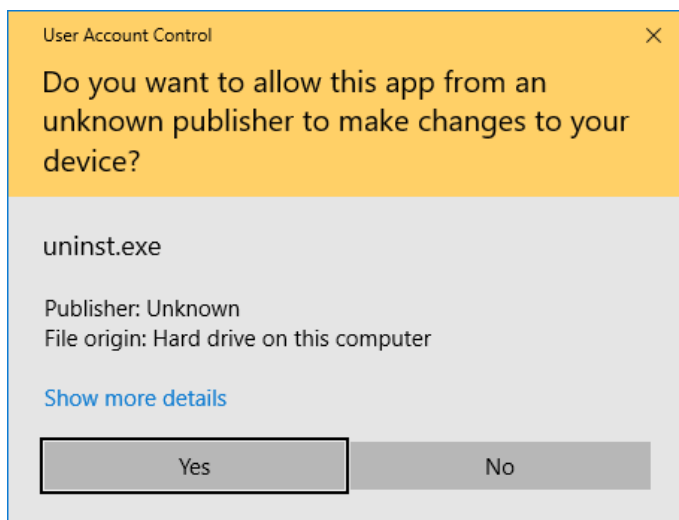


# Uninstallation

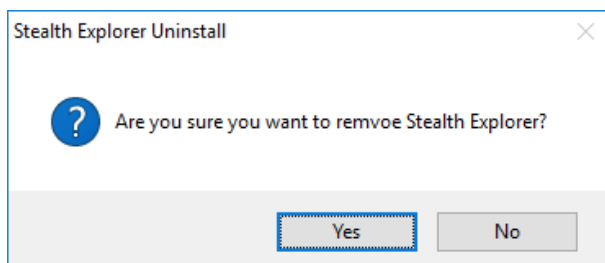
You can uninstall CIDISK™ Pro by using ways provided by the Operating System that your computer has. In this document, Microsoft Windows 10, you can use “**Settings > Apps > Apps & features**” as follows.



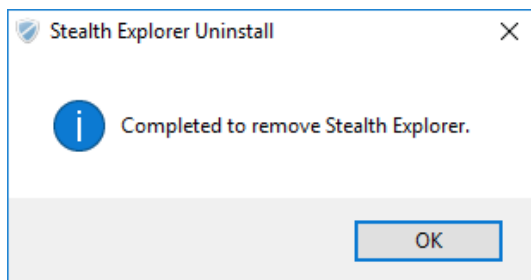
The following dialog will be displayed if the User Account Controls is enabled on your computer. Click the “**Yes**” to allow executing with administrative rights.



The Uninstaller will ask you to confirm the uninstallation as follows. Click the “**Yes**” button to continue.



The uninstaller will remove all files and configures and display the following dialog after uninstalling.



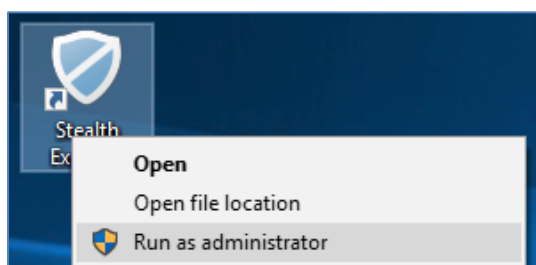
Click the **“OK”** button to complete the uninstallation.

# Create STEALTH

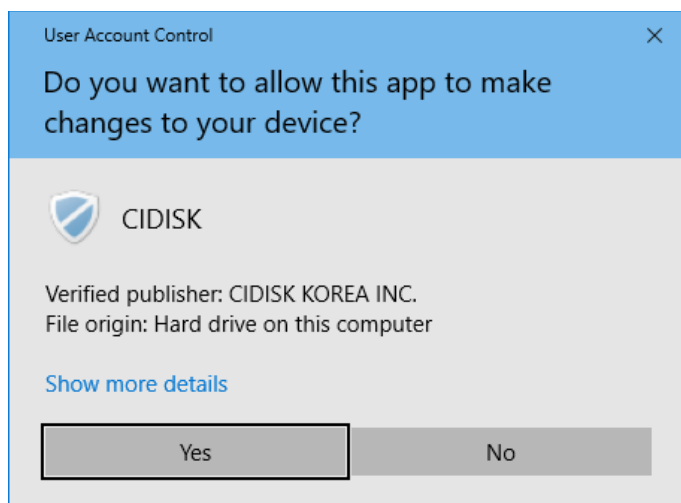
It is possible to create one or more STEALTH space on your disk devices (HDD, UFD etc.) by using CIDISK™ PRO.

## Create STEALTH partition

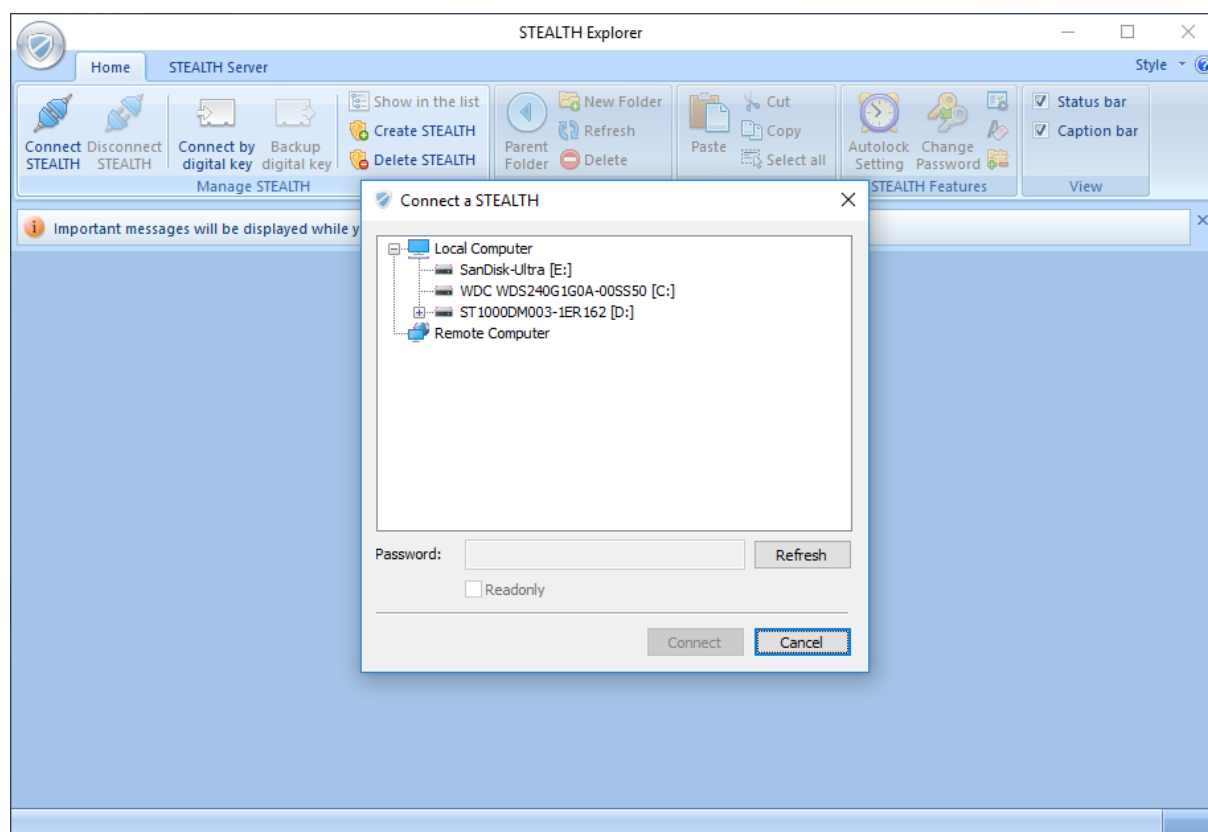
You must execute the “**STEALTH Explorer**” with administrative rights to create a STEALTH partition. For safety reason, CIDISK™ PRO recommends to create a STEALTH space on the STEALTH partition as a default.



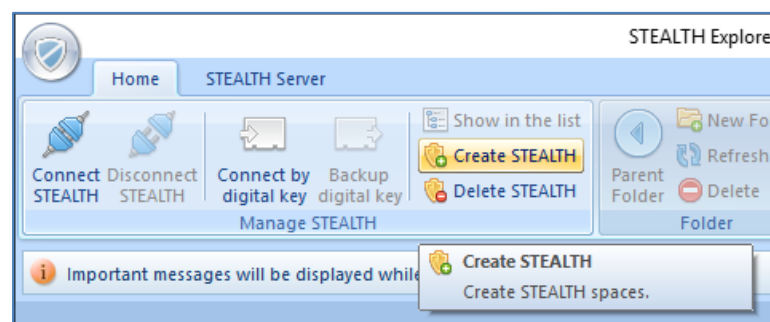
The following dialog will be displayed if the User Account Controls is enabled on your computer. Click “**Yes**” to allow executing with administrative rights.



The “**STEALTH Explorer**” will be launched and displayed as follows.



You can see that there is no STEALTH space connectable now. Click the “**Cancel**” button to close the dialog first.



Click the “**Create STEALTH**” button on the ribbon menu area in the “**STEALTH Explorer**”.

Notice: You should check free space of the disk before creating a STEALTH space. The “**STEALTH Explorer**” will create a STEALTH partition by shrinking a “**NTFS**” volume you selected. If the free space is not enough or there is no “**NTFS**” partition on the disk, please contact with CIDISK, INC.

The “**Create STEALTH**” dialog will be displayed as follows. Select a disk item in the “**Target disk**” to create a STEALTH partition first.

**Create STEALTH**

Target disk: WDC WDS240G1G0A-00SS50 [C:] ST1000DM003-1ER162 [D:] Refresh

Serial number:

Disk length:

Partition details

No	Start(MB)	Size(MB)	Volumes	ETC

Create STEALTH partition Delete STEALTH partition

☐ Manually define STEALTH location

Start location: 0 MB STEALTH length: 0 MB

Enter STEALTH license Create Cancel

One or more volume letters will be displayed for your reference from the right side of the item so that you can select correct disk item to do following jobs.

Once you selected a disk item, details of the disk item will be displayed including partition information, serial number and disk length as following.

Each partition item will have its number, start position and its length and additional information like **“Shrinkable”** in case of it has **“NTFS”** file system.

**Create STEALTH**

Target disk: ST1000DM003-1ER162 [D:] Refresh

Serial number: Z4YE3ED7

Disk length: 931.51 GB

Partition details

No	Start(MB)	Size(MB)	Volumes	ETC
1	1	953,867	D: W	DATA, Shrinkable

Create STEALTH partition Delete STEALTH partition

☐ Manually define STEALTH location

Start location: 0 MB STEALTH length: 0 MB

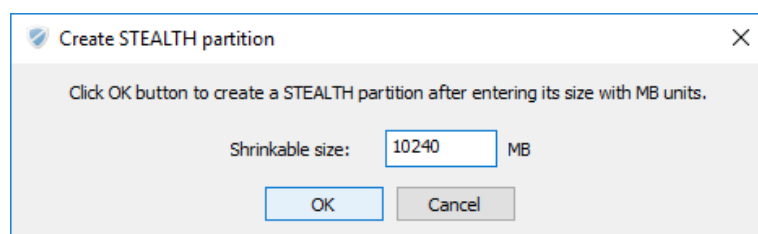
Enter STEALTH license Create Cancel

Select a shrinkable partition and click the **“Create STEALTH partition”** button.

The **“STEALTH Explorer”** will calculate how much space can be shrunk and display its result. Please wait a while until the result is appeared.

**Notice:** The time taking for the calculation may be different depending on the fragmentation status of the

partition you have selected. It is highly recommended to “**Defragment**” first before doing this operation.



Create STEALTH partition

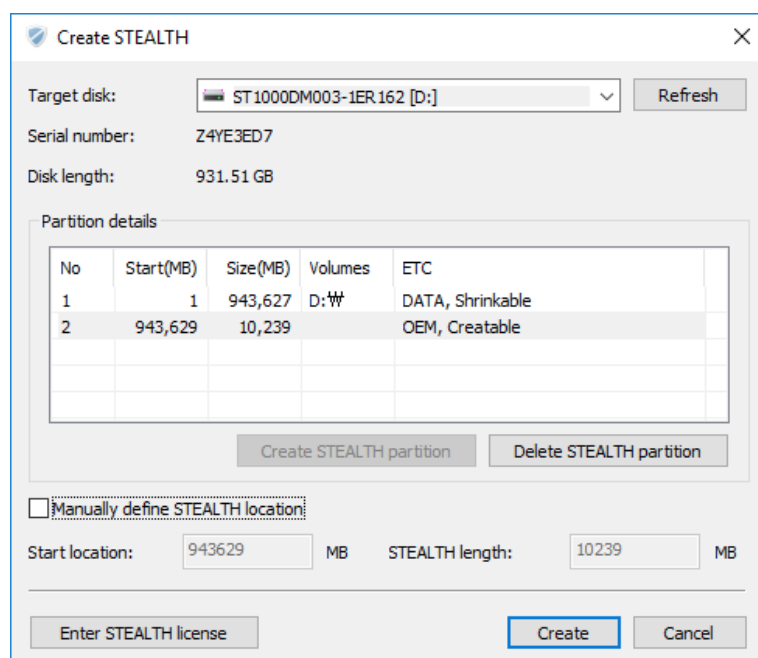
Click OK button to create a STEALTH partition after entering its size with MB units.

Shrinkable size:  MB

After completed the calculation, you can see the possible size to shrink. Enter the “**Shrinkable size**” as MB units and click the “**OK**” button.

※ Reference: 1MB=1,024KB, 1KB=1,024Bytes, 1,024MB=1GB

Once the shrinking has completed, a new STEALTH partition will be created with **OEM** or **LDM** attributes as follows. If the shrinking has failed, its error message will be displayed as a warning dialog so that you can send the error message to CIDISK, INC for solving the problem.



Create STEALTH

Target disk:

Serial number: Z4YE3ED7

Disk length: 931.51 GB

Partition details

No	Start(MB)	Size(MB)	Volumes	ETC
1	1	943,627	D: W	DATA, Shrinkable
2	943,629	10,239		OEM, Creatable

☐ Manually define STEALTH location:

Start location:  MB STEALTH length:  MB

# Create STEALTH space

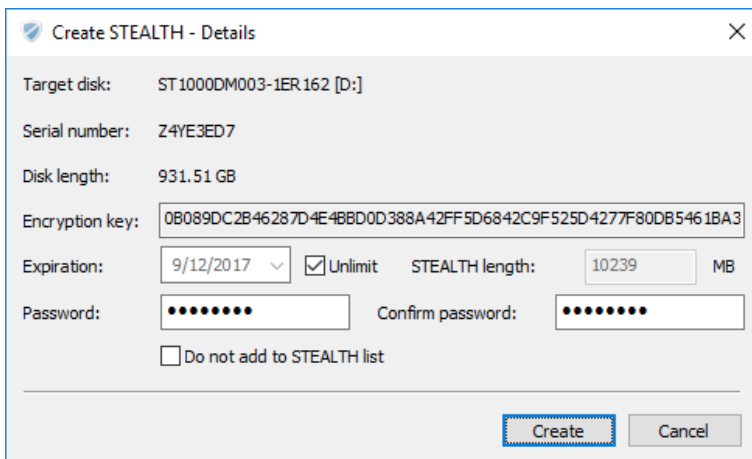
If you done the previous step to create a STEALTH partition or the selected disk already have a partition which can be used as a STEALTH partition, you can create a STEALTH space as follows.

In the “**Create STEALTH**” dialog, select a STEALTH partition to create a STEALTH space and click the “**Create**” button.

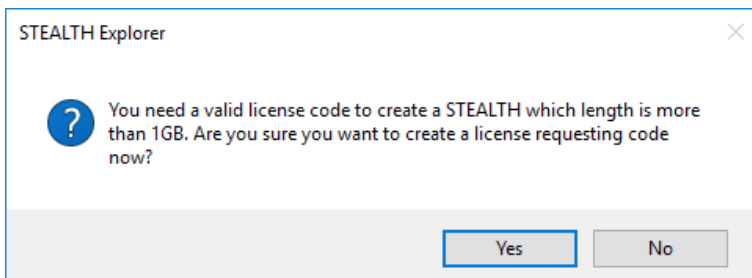
Notice: When you select a STEALTH partition, the “**Start location**” and “**STEALTH length**” will be updated automatically. Even though you can use the “**Manually define STEALTH location**” to change the position values, incorrect values can make your disk device to be malfunctioned. We recommend that you do not use that function if you don’t have enough knowledge of the disk partitioning.

The “**Create STEALTH – Details**” dialog will be displayed as follows. After set up the detail information including the “**Expiration**”, “**Password**” and “**Do not add to STEALTH list**”, click the “**Create**” button.

Notice: The password must have 8~64 characters length and at least one **Alphabet Capital and Small Character, Numeric Character** and **Special Character** as a default. The STEALTH space will not be appeared in the “**Connect a STEALTH**” dialog if you check the “**Do not add to STEALTH list**” so that you can hide even the existence of your STEALTH space.



Once you click the “**Create**” button, the “**STEALTH Explorer**” will check the “**STEALTH length**” and pops up following dialog if the length is over than 1GB.



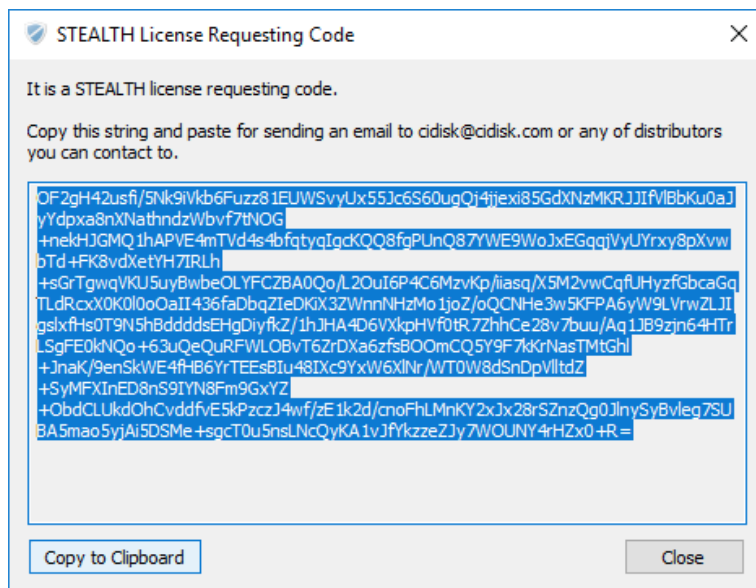
※ Reference: You don’t need an official license if the STEALTH length is less than 1GB.

Click the “**Yes**” button to create a “**License Requesting Code**”.

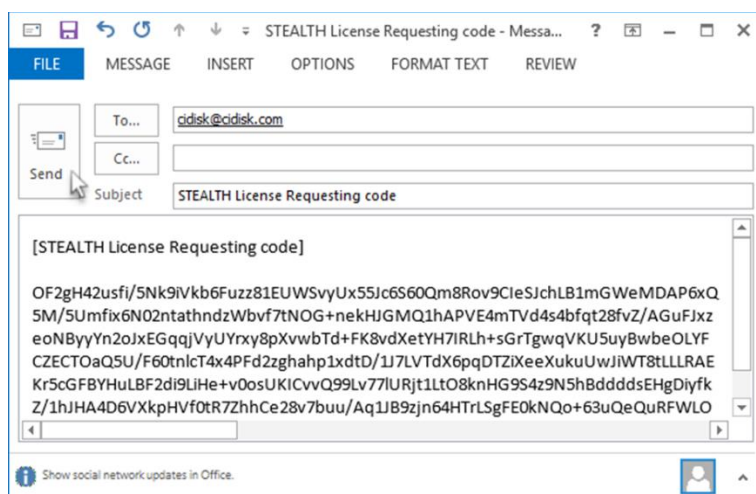
The “**STEALTH Explorer**” will create a “**License Requesting Code**” having all conditions you have defined.

You can cancel the step if you have defined wrong value and create the “**License Requesting Code**” again.

After completing to create the “**License Requesting Code**”, the following dialog will be displayed.



The “**License Requesting Code**” consists of only ANSI characters so that you can copy and paste them to other applications. Please send the code to CIDISK, INC. or its sales representatives by using e-mail as follows.



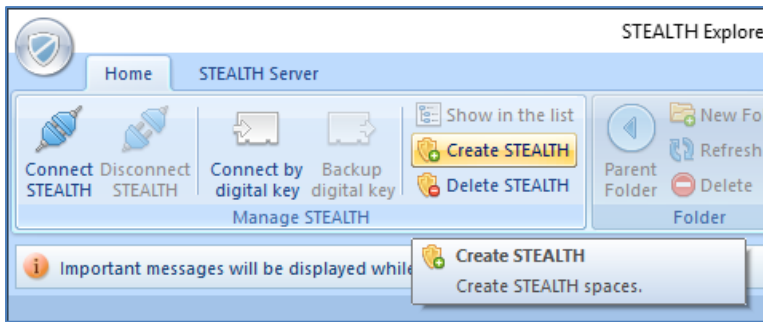
**Notice:** Please contact to CIDISK, INC. about the price of issuing an official license.

You can continue to create a STEALTH space after getting an official license from CIDISK, INC. or its sales representatives.

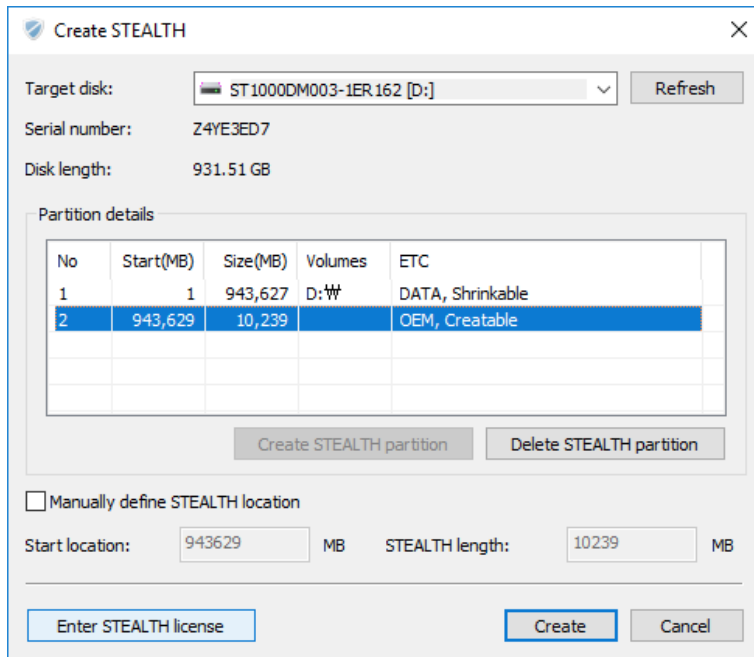
Open the “**Create STEALTH**” dialog and select a “**Target disk**” again as follows.

**Notice:** You have to select a same disk which you have selected for creating a “**License Requesting Code**”.

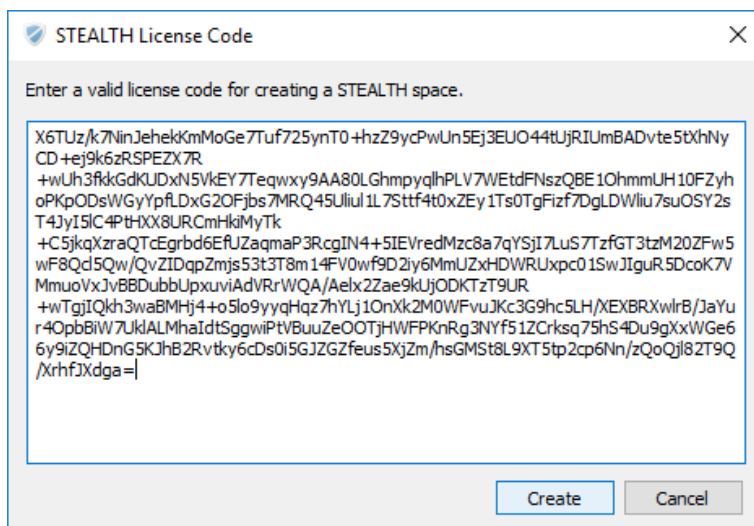




Click the “Enter STEALTH license” button.

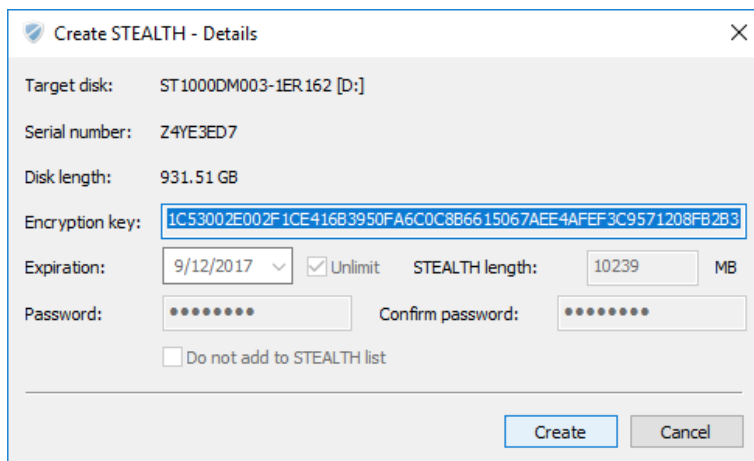


The “STEALTH License Code” dialog will be displayed for entering the official license.



Click the “Create” button after entering your official license in the dialog.

The “Create STEALTH – Details” dialog will be displayed again and shows all values you have defined for confirming finally.



**Create STEALTH - Details**

Target disk: ST1000DM003-1ER162 [D:]

Serial number: Z4YE3ED7

Disk length: 931.51 GB

Encryption key: 1C53002E002F1CE416B3950FA6C0C8B6615067AEE4AFE43C9571208F82B3

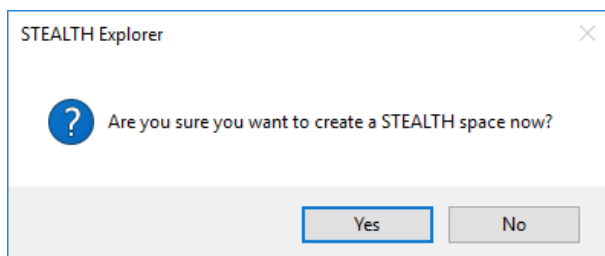
Expiration: 9/12/2017 ☒ Unlimit STEALTH length: 10239 MB

Password:  Confirm password:

☐ Do not add to STEALTH list

**Create** **Cancel**

If there is no problem, click the **“Create”** button. The **“STEALTH Explorer”** will ask finally to confirm as follows. Click the **“Yes”** button to create a STEALTH space.

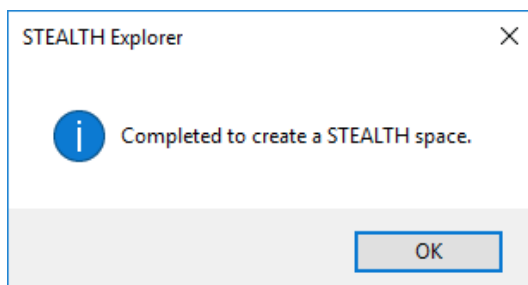


**STEALTH Explorer**

Are you sure you want to create a STEALTH space now?

**Yes** **No**

The following dialog will be displayed after completing to create a STEALTH space.



**STEALTH Explorer**

Completed to create a STEALTH space.

**OK**

Click the **“OK”** button to complete.

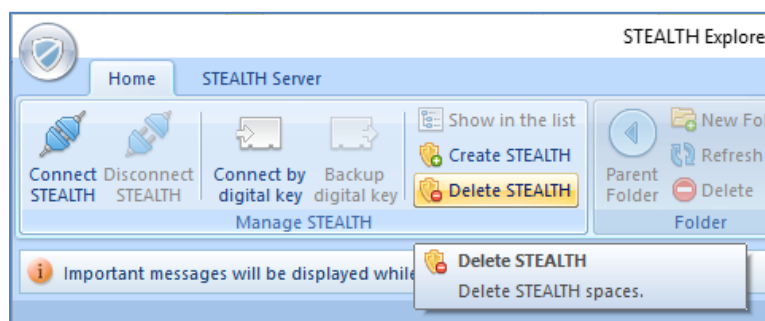
**Notice:** It is highly recommended to keep the **“License Requesting Code”** and **“License Response Code”** for reset or recovering your STEALTH space later in case of that you lost your password.

# Delete STEALTH

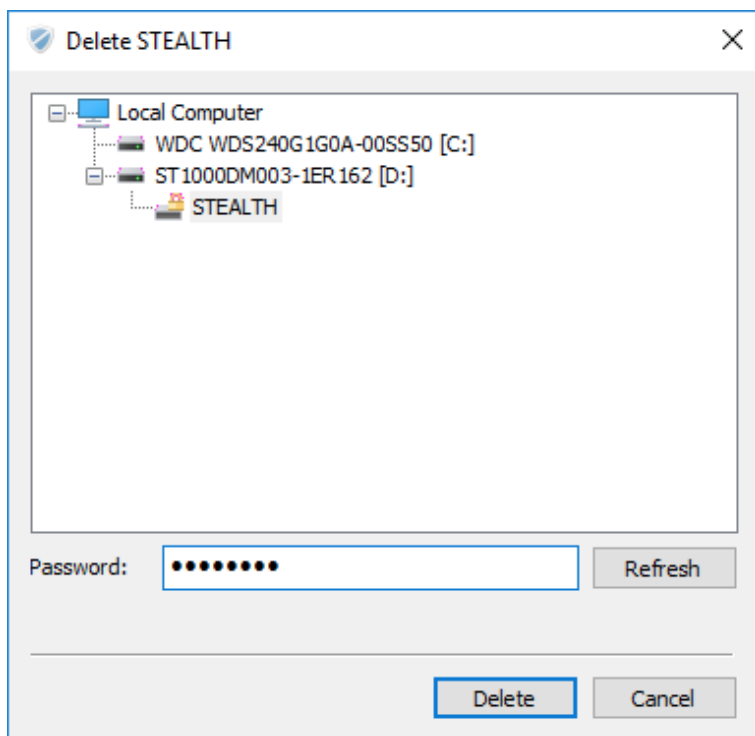
It is possible to delete one or more STEALTH space that you have used.

## Delete STEALTH space

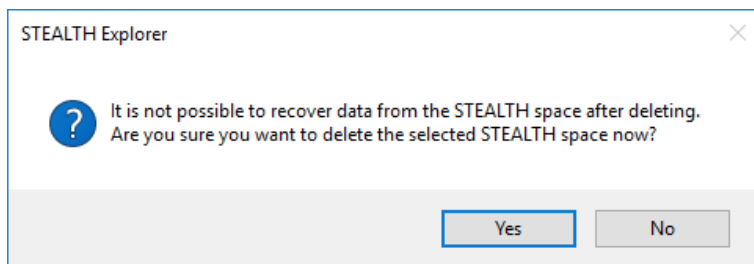
You should disconnect from a STEALTH space which you want to delete and click the **“Delete STEALTH”** button on the ribbon menu area in the **“STEALTH Explorer”**.



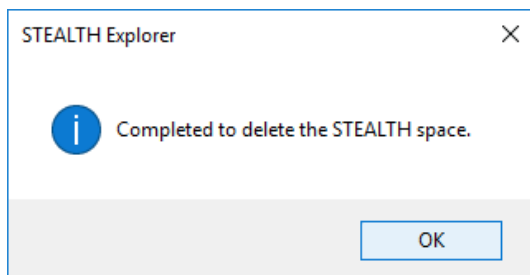
The **“Delete STEALTH”** dialog will be displayed allowing you can delete a disconnected STEALTH space. Select a STEALTH space to delete and click the **“Delete”** button with providing your STEALTH password.



The **“STEALTH Explorer”** will ask you to confirm to delete. Please note that you can't recover once you have deleted a STEALTH space only except you have an official license that you used for creating the STEALTH space. Click the **“Yes”** button to delete.



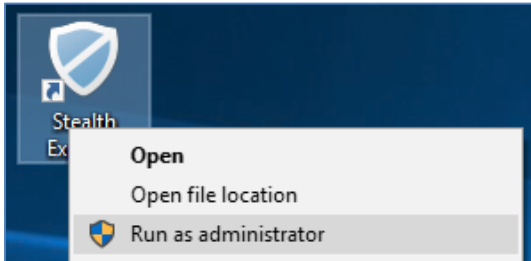
The following dialog will be displayed after deleting the STEALTH space. Click the “**OK**” button to complete.



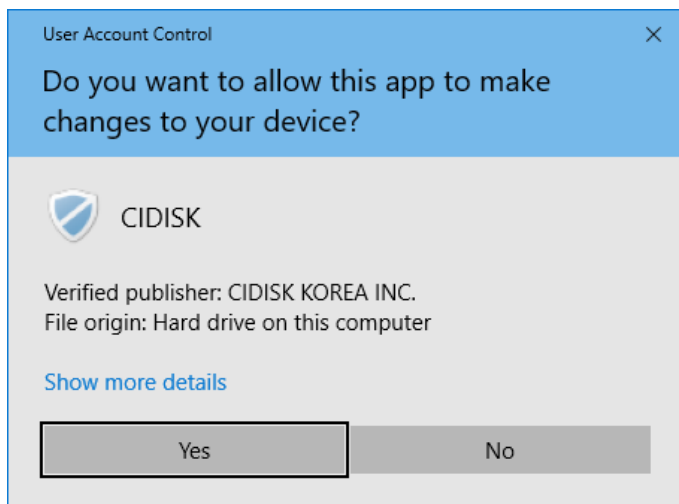
# Delete STEALTH partition

You can delete a STEALTH partition which has been used for a STEALTH space and merge it to any of normal volume to use its space.

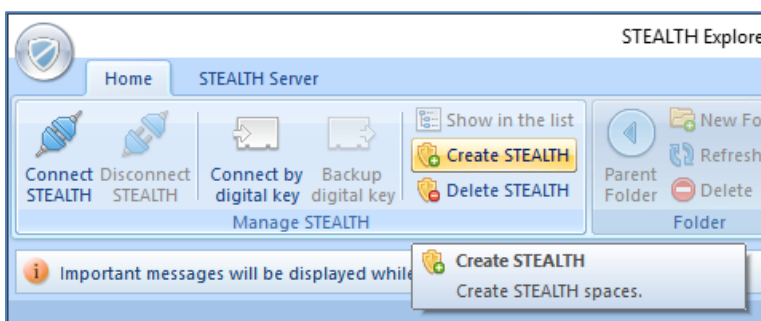
You must execute the “**STEALTH Explorer**” with administrative rights to delete a STEALTH partition.



The following dialog will be displayed if the User Account Controls is enabled on your computer. Click the “**Yes**” to allow executing with administrative rights.



The “**STEALTH Explorer**” will be launched. Click the “**Create STEALTH**” button on the ribbon menu area in the “**STEALTH Explorer**”.



The “**Create STEALTH**” dialog will be displayed as follows. Select a “**Target disk**” item which has a STEALTH partition you want to delete. The STEALTH partition always shows the “**Creatable**” information. After selecting a STEALTH partition, click the “**Delete STEALTH partition**” button.

**Notice:** You don't need to delete a STEALTH partition after deleting a STEALTH space if you don't want to use the space for a normal volume.

**Create STEALTH**

Target disk: ST1000DM003-1ER162 [D:] Refresh

Serial number: Z4YE3ED7

Disk length: 931.51 GB

Partition details

No	Start(MB)	Size(MB)	Volumes	ETC
1	1	943,627	D:₩	DATA, Shrinkable
2	943,629	10,239		OEM, Creatable

Create STEALTH partition Delete STEALTH partition


☐ Manually define STEALTH location

Start location: 943629 MB STEALTH length: 10239 MB

Enter STEALTH license Create Cancel

The following dialog will be displayed to confirm.

**STEALTH Explorer**

 Are you sure you want to delete the STEALTH partition you have selected?

Yes No

Click the “**Yes**” button to delete a STEALTH partition.

The deleting will be taking place and an error message will be displayed if it is failed. The selected STEALTH partition will be removed from the list and its size will be added to the adjacent “**NTFS**” partition as follows.

Create STEALTH

×

Target disk:

ST1000DM003-1ER162 [D:]

Refresh

Serial number:

Z4YE3ED7

Disk length:

931.51 GB

Partition details

No	Start(MB)	Size(MB)	Volumes	ETC
1	1	953,867	D:₩	DATA, Shrinkable

Create STEALTH partition

Delete STEALTH partition

☐ Manually define STEALTH location

Start location:

943629

MB

STEALTH length:

10239

MB

Enter STEALTH license

Create

Cancel

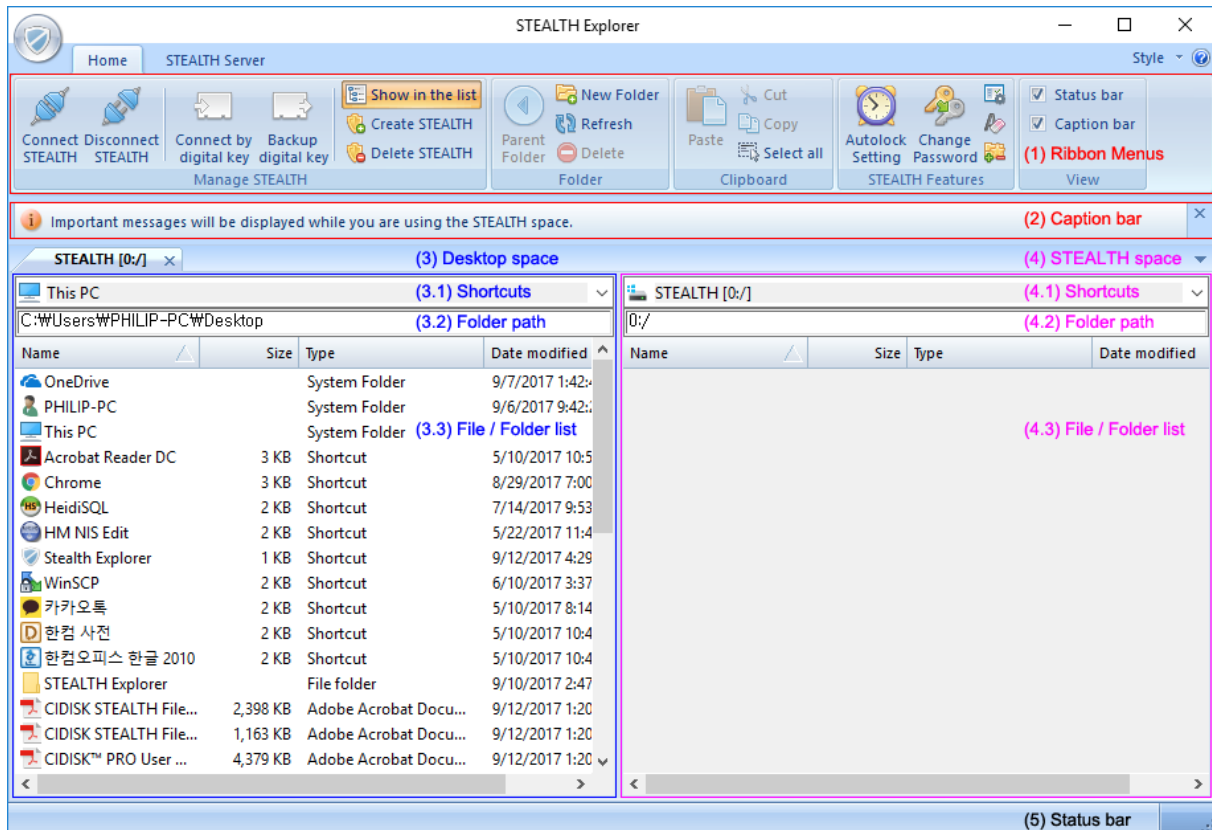
It is completed to delete a STEALTH partition. Click the “**Cancel**” button to complete.

# Use STEALTH Explorer

## STEALTH Explorer

The “**STEALTH Explorer**” enables user to manipulate important data saved in the STEALTH space.

The featured areas of the “**STEALTH Explorer**” are as follows.



### Ribbon menus

The “**Ribbon menus**” of the “**STEALTH Explorer**” has featured menus for manipulating. Each menu item is only enabled when it is possible to use or disabled automatically.

### Caption bar

The “**STEALTH Explorer**” shows informational messages while you are manipulating. You can check and know states and results of the “**STEALTH Explorer**” by using the message in this area. By toggling the “**Caption bar**” in the “**Ribbon menus**” area, you can hide or show this area.

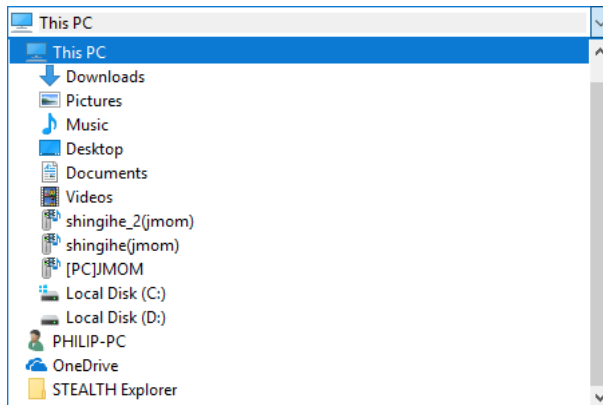


## Desktop space

This space is used for listing objects of your desktop environment of which the “**STEALTH Explorer**” is executing now and very useful when you manipulate file or folder objects between the “**STEALTH space**” and your desktop even without Windows Explorer.

### 1) Shortcuts

You can select a shortcut to move the featured location directly in your desktop. By clicking the arrow button in the right side to see your shortcuts and select a shortcut then child objects of the location will be listed in the “**File / Folder list**”.



※ Shortcuts in this area may be different depending on the Operating System you are using.

### 2) Folder path

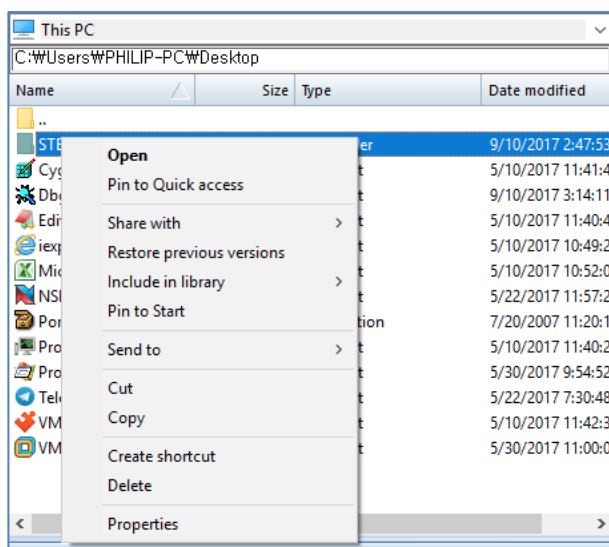
This area displays detail path information of the parent folder of objects listed in the “**File / Folder list**” area. You can directly enter a valid folder path to move to the location so that objects in the “**File / Folder list**” will be automatically refreshed.



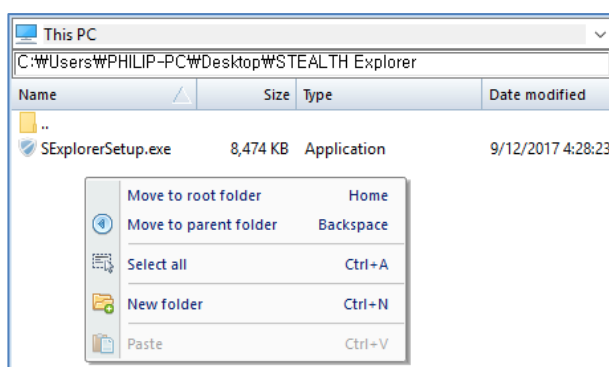
※ Copy or Cut a folder path from Windows Explorer or other applications and Paste it to this space is also possible.

### 3) File / Folder list

All child objects of which you have selected as a parent folder are listed in this area.



You can use dedicated context menus depending on the object you have selected. The way to use a context menu is same as you are using Windows Explorer only except when you do right-click of the mouse on the empty area. In this case, a dedicated context menu will be displayed as follows.

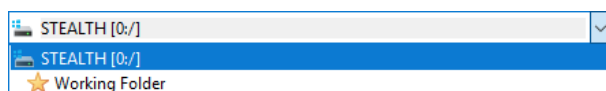


## STEALTH space

All files and folders in the connected STEALTH space are displayed in this area.

### 1) Favorites

You can select a favorite item of a connected STEALTH space. By clicking the arrow button in the right side to see your favorites and select a favorite. Then child objects of the favorite's location will be listed in the **"File / Folder list"**.



※ Favorite items are registered by user.

### 2) Folder path

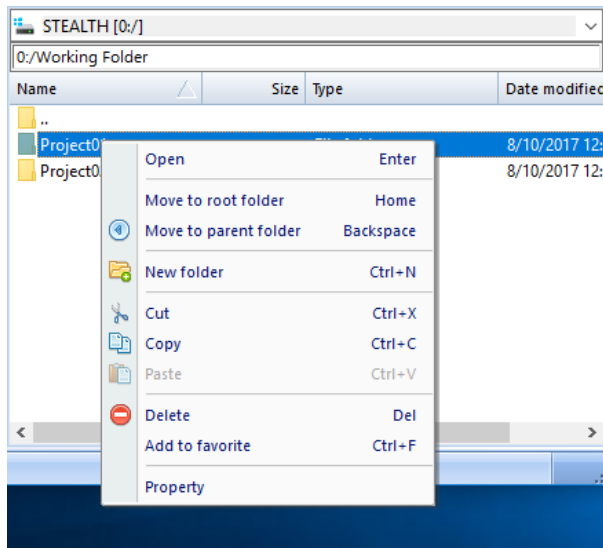
This area displays detail path information of the parent folder of objects listed in the **"File / Folder list"** area. You can directly enter a valid folder path to move to the location so that objects in the **"File / Folder list"** will be automatically refreshed.

0:/Working Folder

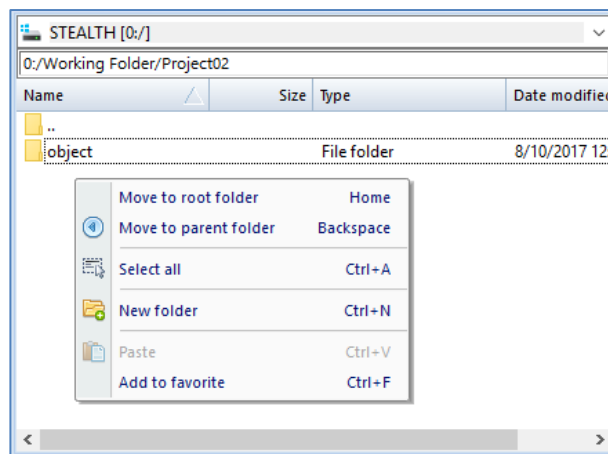
- ※ The way to identify folders or files in a STEALTH space is different to Microsoft Window's one. For example, the Windows Explorer or other applications must use a drive letter like “C:”, “D:” and “\” as a separator to identify. But in a STEALTH space, the drive letter uses a number like “0:”, “1:” and “/” as a separator to identify.

### 3) File / Folder list

All child objects of which you have selected as a parent folder are listed in this area.



You can use dedicated context menus depending on the object you have selected. The context menus are provided by the “**STEALTH Explorer**”.

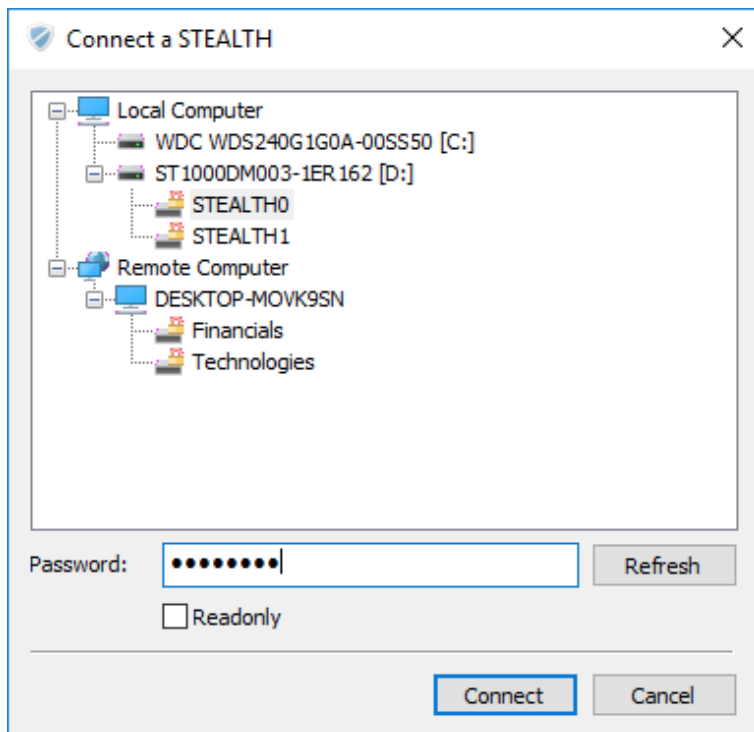
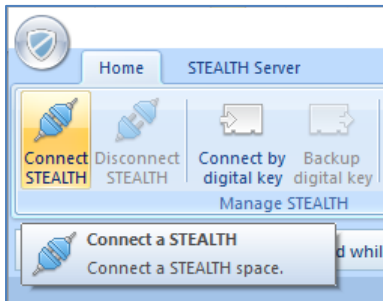


### Status bar

The “**STEALTH Explorer**” shows status information as a text in this area while you’re manipulating. You can check and know status of the “**STEALTH Explorer**” by using text messages in this area. By toggling the “**Status bar**” in the “**Ribbon menus**” area, you can hide or show this area.

# Connect a STEALTH by dialog

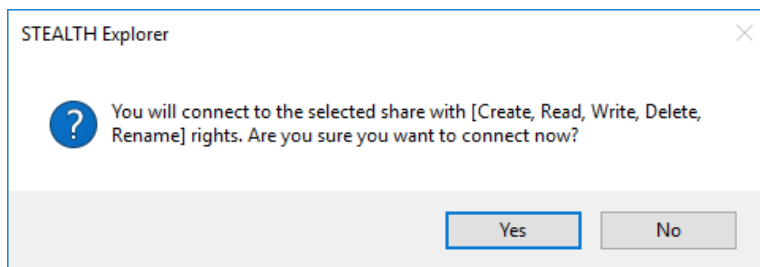
This is a basic method to connect a STEALTH space provided by the “**STEALTH Explorer**”. When you launch the “**STEALTH Explorer**” and click the “**Connect STEALTH**” button, the “**Connect a STEALTH**” dialog will be displayed as follows.



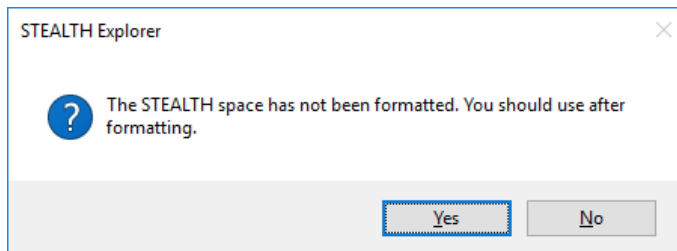
The “**Connect a STEALTH**” dialog shows all STEALTH spaces connectable and located on the disk devices connected to your computer. The “**Remote Computer**” will have connected STEALTH File Servers and Shares assigned to the current user account logged in.

Click the “**Connect**” button after selecting a STEALTH space and providing your password. If you check the “**Readonly**” at this time, the STEALTH space will be connected as read-only mode.

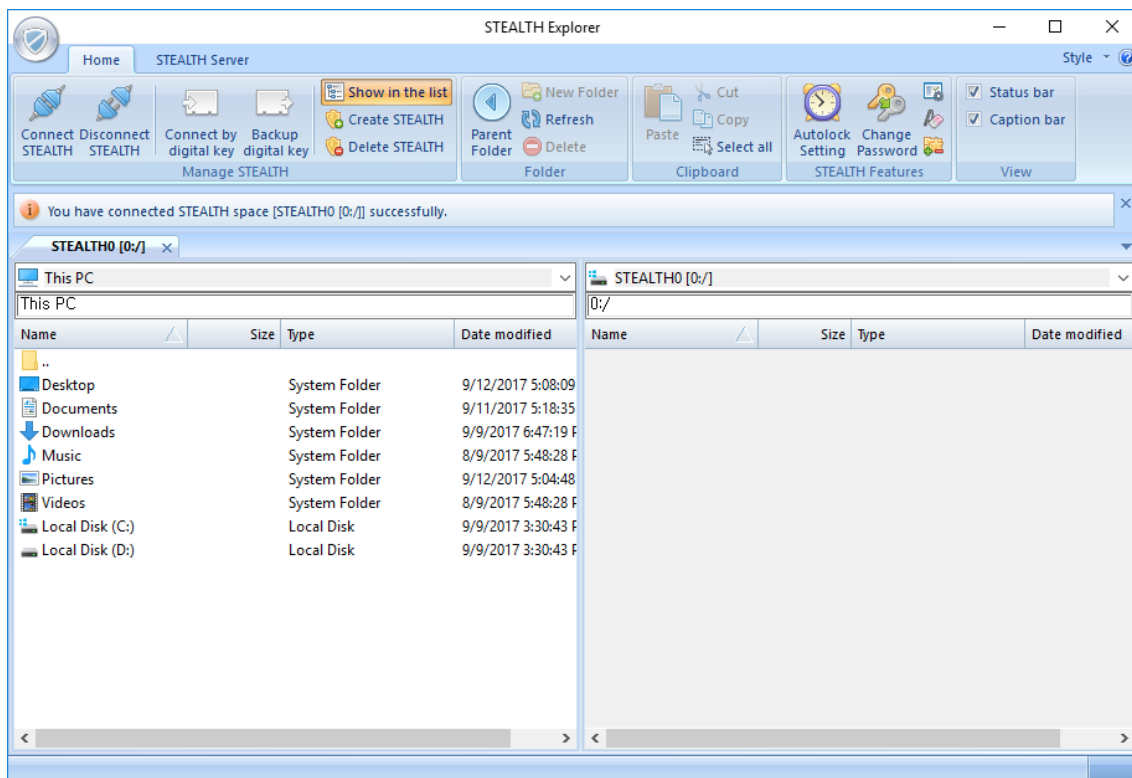
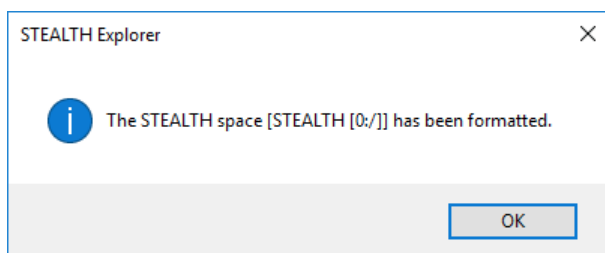
If the selected STEALTH space is a Share from STEALTH Server, it will display following dialog showing the privileges instead of asking password.



If you connect to local STEALTH space for the first time, a dialog will be displayed and ask you to confirm to format as follows. Click the “**Yes**” button to format the STEALTH space.



The following dialog will be displayed after completing the format. Click the “**OK**” button then the main window of the “**STEALTH Explorer**” will be shown.



# Connect a STEALTH by Digital Key

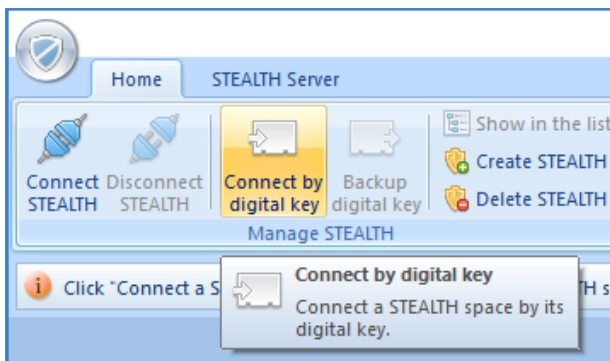
It is possible to recognize whether there is a STEALTH space or not if you are using the “**Connect a STEALTH**” dialog because the “**STEALTH Explorer**” is provided as a public software. You may want to hide even the existence of your STEALTH space for more security. In this case, you can connect to a STEALTH space by using its “**Digital Key**” that you have backup.

**Notice:** You can't use both “**Connect by digital key**” and “**Backup digital key**” when you're connecting to remote Shares hosted by a STEALTH File Server.

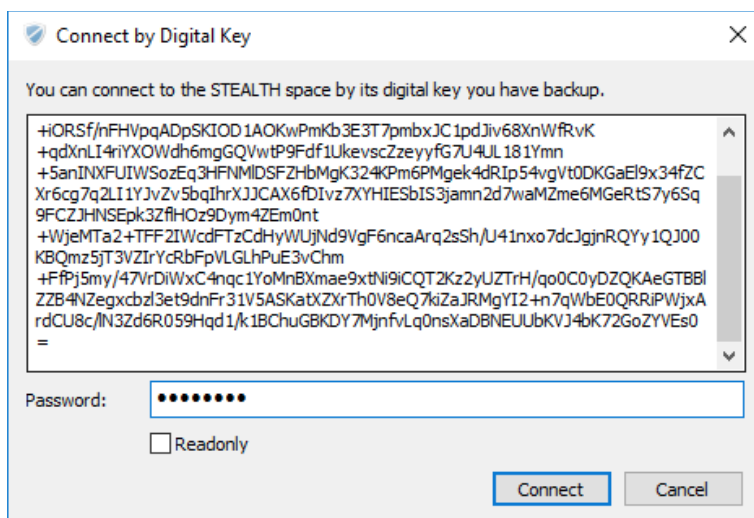
**Reference: What Digital Key is?** – When you create a STEALTH space, the “**STEALTH Explorer**” assigns unique encryption key and values regarding the space dynamically and encrypts them by using your password to make a “**Digital Key**”. The “**Digital Key**” guarantees that it is a unique in the world so that the “**STEALTH Explorer**” updates the “**Digital Key**” automatically when you change the password or values belong to the “**Digital Key**”. For this reason, it is highly recommended that you should backup the “**Digital Key**” each time it is updated.

For the backup, please refer the “**Backup Digital Key**” section in this manual.

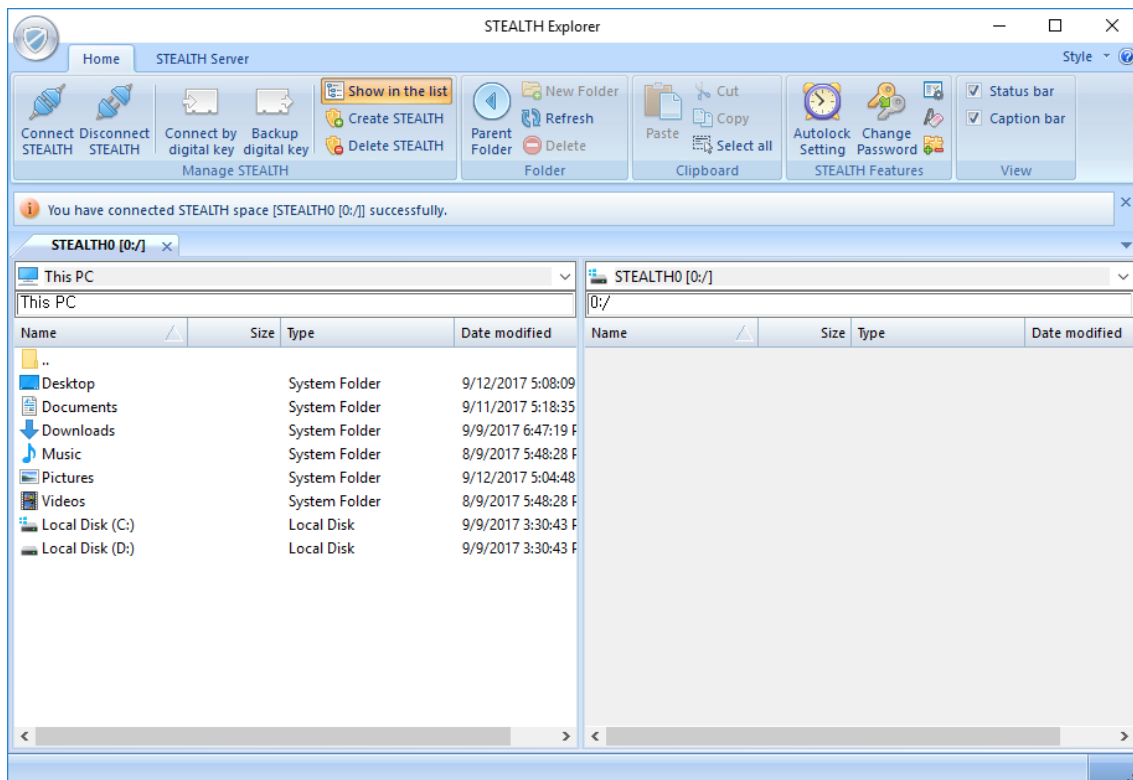
Click the “**Connect by digital key**” button in the ribbon menu area after executing the “**STEALTH Explorer**” and canceling the “**Connect a STEALTH**” dialog.



A dialog letting you enter your digital key will be displayed as follows. Provide the “**Digital Key**” you have backup and click the “**Connect**” button to connect with entering you password. The “**Readonly**” option also can be checked if you need.

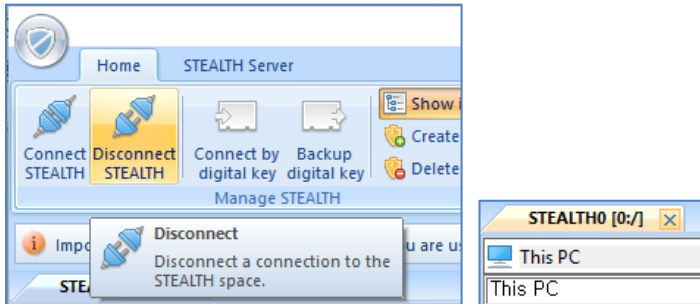


The STEALTH space will be connected and displayed as following if the password is correct.

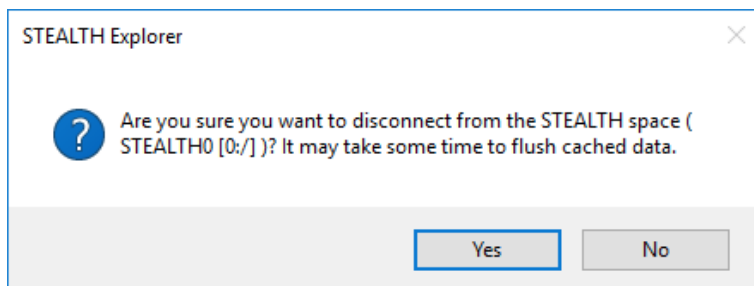


# Disconnect STEALTH

To disconnect from a STEALTH space you have used, click the **“Disconnect STEALTH”** button in the ribbon menu area or **“X”** button on the tab which is showing the STEALTH space.



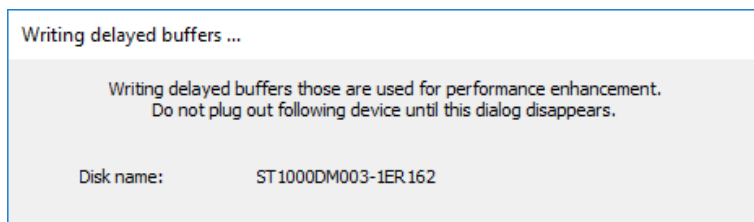
The **“STEALTH Explorer”** will display a dialog to confirm as follows.



Click the **“Yes”** button to disconnect from the STEALTH space.

Notice: The **“STEALTH Explorer”** uses cache buffers for delayed-writing to enhance its performance for writing folders or files. Do not plug out when you're disconnecting from a STEALTH space until the cache buffers have flushed completely. **We do not guarantee data corrupted if you do not follow this instruction.**

The **“STEALTH Explorer”** will display a dialog when cache buffers are being flushed. Please wait until this dialog is disappeared as your disk device is connected.



Reference: The **“STEALTH Explorer”** closes immediately without displaying the dialog to confirm or extra warning if you plug a disk device which has the STEALTH space connected.



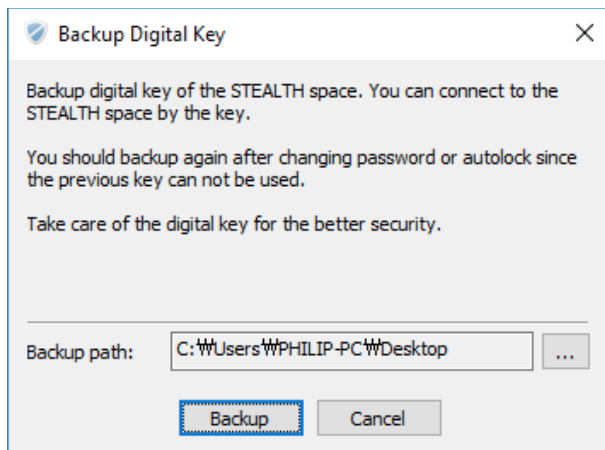
# Backup Digital Key

To back up the **“Digital Key”**, click the **“Backup digital key”** button in the ribbon menu area as follows.

Notice: You can't use both **“Connect by digital key”** and **“Backup digital key”** when you're connecting to remote Shares hosted by a STEALTH File Server.



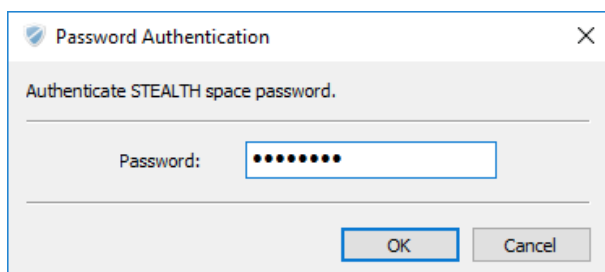
The **“STEALTH Explorer”** will display the **“Backup Digital Key”** dialog as follows.



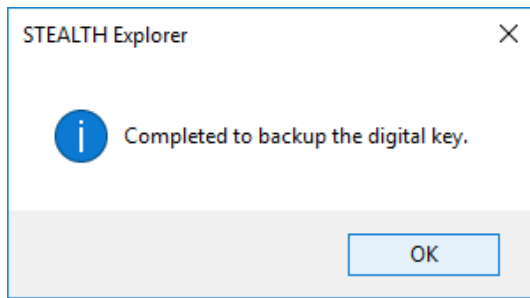
The **“Digital Key”** is updated automatically each time you change the password or auto-locking time so that you need to back up after those updates.

Click the **“Backup”** button after selecting a valid folder path to back up the **“Digital Key”**.

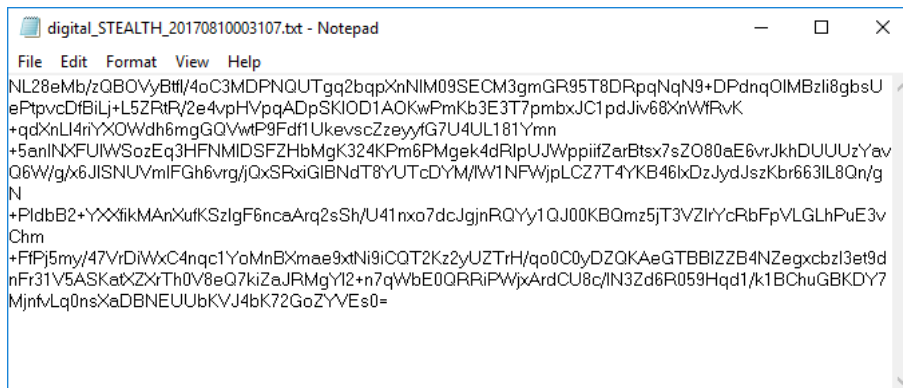
The **“STEALTH Explorer”** will display a dialog asking you to provide the password. Click the **“OK”** button with providing the password.



The following dialog will be displayed after completing the backup. Click the **“OK”** button to complete.



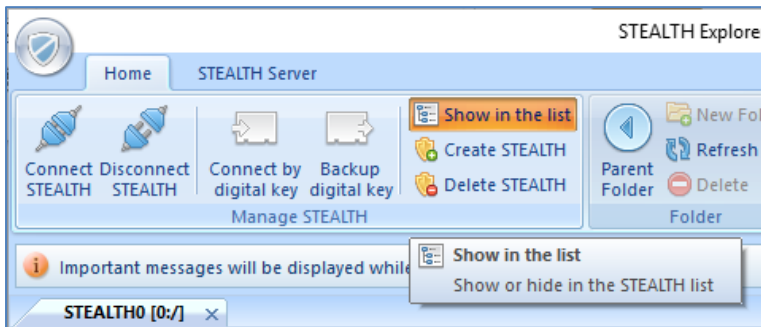
The “**STEALTH Explorer**” will display the “**Digital Key**” on a notepad application as follows. You can copy and paste the “**Digital Key**” since it consists of only ASCII characters.



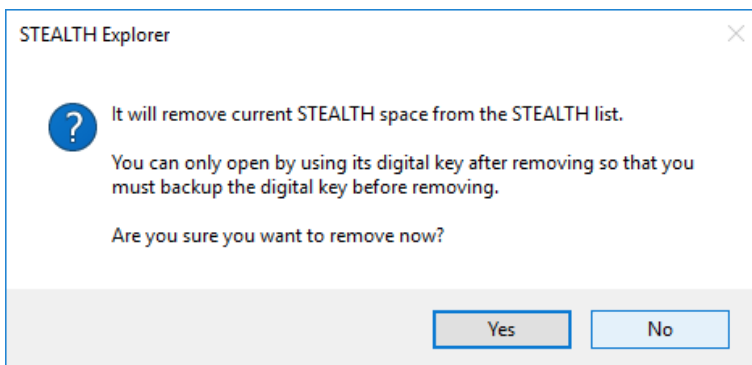
# Show in the list

You can choose whether the “**STEALTH Explorer**” lists a connected STEALTH space in the “**Connect a STEALTH**” dialog or not. Click the “**Show in the list**” button in the ribbon menu area. This button is a toggle type so that it shows current status at the same time.

**Notice:** You can't use this function when you're connecting to remote Shares hosted by a STEALTH File Server.

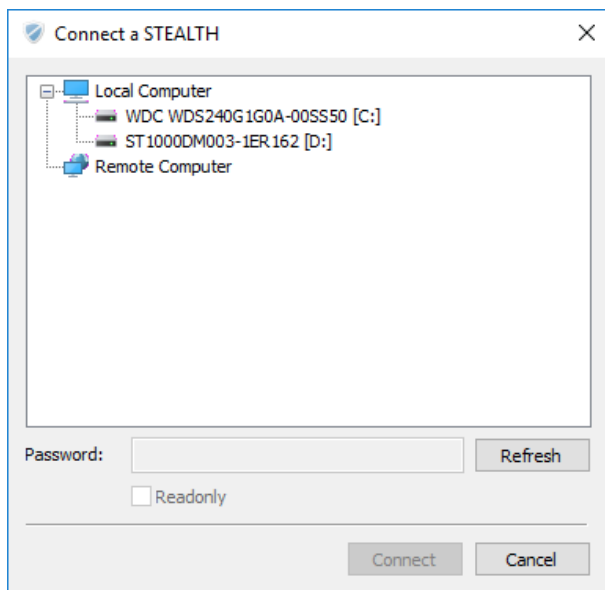


As above, the STEALTH space will be in the list of the “**Connect a STEALTH**” dialog. The following dialog will be displayed when you click the button.

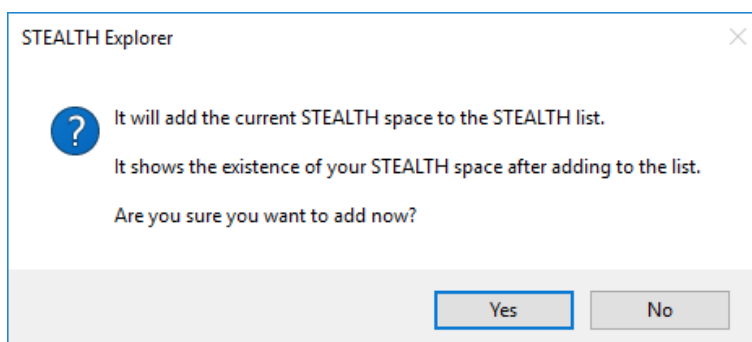


After removing the current STEALTH space from the list, you can only connect to the STEALTH space by using its “**Digital Key**”. You need to check whether you have back up the “**Digital Key**” and click the “**Yes**” button if you did.

The removed STEALTH space will not be displayed in the “**Connect a STEALTH**” dialog as follows.



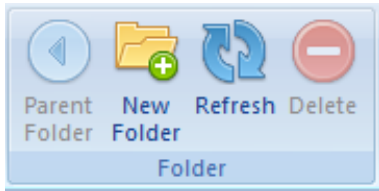
You can connect to the STEALTH space removed from the list by using its **“Digital Key”**. You can also change the option to show the list in the **“Connect a STEALTH”** dialog again after connecting by its **“Digital Key”**. The following dialog will be displayed when you click the **“Show in the list”** button to add to the list.



Be aware of that once you have added a STEALTH space to the list, it is possible to check whether any of STEALTH space in your disks even though you did not connect to the STEALTH space.

# Folder

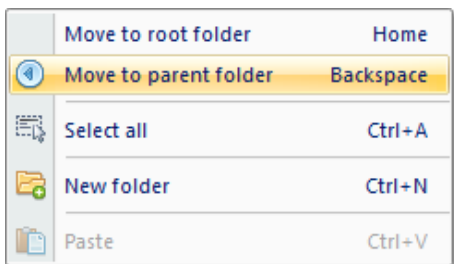
You can manipulate folders in a STEALTH space connected by using this ribbon menus. The following is the ribbon menu area.



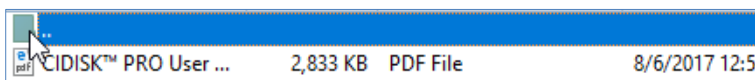
## Parent Folder

You can move to the parent folder of which the “**STEALTH Explorer**” is currently listing in the “**File / Folder list**” area.

You can also move to a parent folder by using context menu as follows.



Click the “**Move to parent folder**” item or push the “**Backspace**” key in your keyboard to move to a parent folder.



The other way to move to a parent folder is that you do double-click on the “...” folder item in the “**File / Folder list**” area. The “...” folder item may not be displayed depending on the current STEALTH folder path.

## New Folder

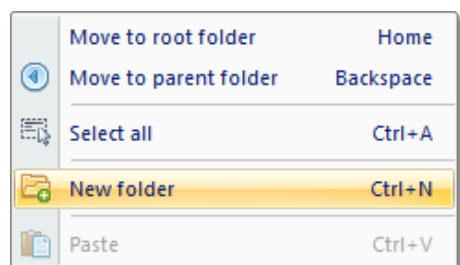
You can create a new folder both in the Desktop space and STEALTH space connected. In case of the Desktop space, it may be impossible depending on the current location’s attributes.

You can change the name of created folder immediately after creating as follows.

Name	Size	Type	Date modified
..			
Project01		File folder	8/10/2017 12:
Project02		File folder	8/10/2017 12:

Also you can rename whenever you want by pushing “F2” key in your keyboard or holding the left button of mouse pushed on the item that you want to rename.

The other ways to create a new folder are that you can select the “New folder” in the context menu or push “Ctrl + N” key in your keyboard.



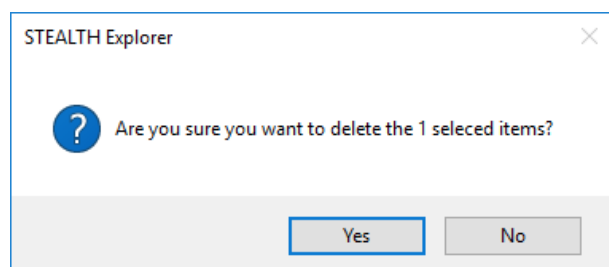
## Refresh

You can refresh files or folders in the current location of a STEALTH space connected. The other way to refresh is that you can push the “F5” key in your keyboard.

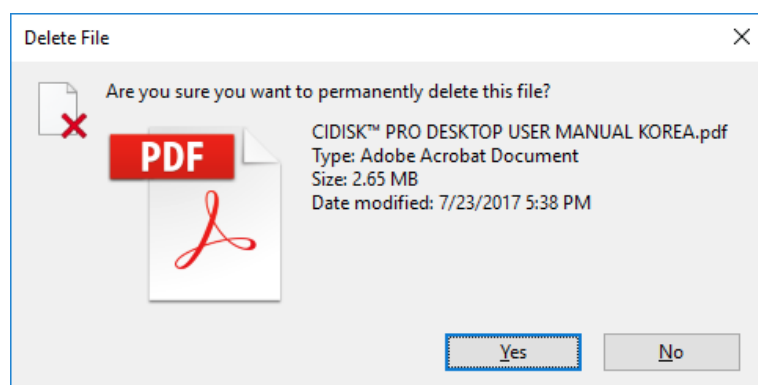
## Delete

You can delete selected items both in the Desktop space and STEALTH space connected. In case of the Desktop space, some items can't be deleted because it is special item owned by the Operating System.

The “STEALTH Explorer” will display a dialog to confirm the deleting in a STEALTH space as follows.

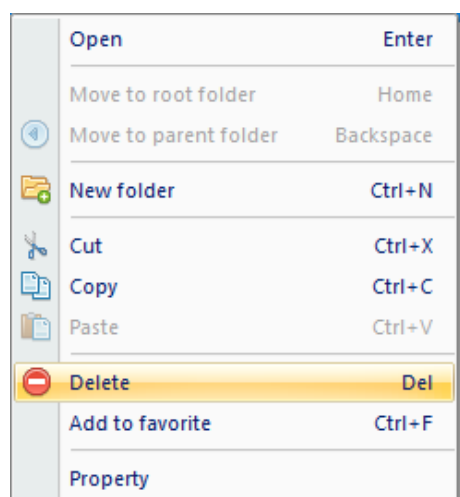


The “STEALTH Explorer” will display a dialog to confirm the deleting in the Desktop space as follows.



The other ways to delete are that you can select the “Delete” item in the context menu or push the “Del” key

in your keyboard as follows.



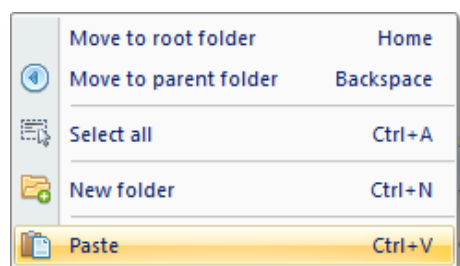
## Clipboard

You can exchange folders or files between “**STEALTH Explorer**” and other applications including Windows Explorer by using the Clipboard. The related menus are in the ribbon menu area as follows.



## Paste

You can paste folders or files into “**STEALTH Explorer**” by using data saved in the clipboard. The other ways to paste are that you can select the “**Paste**” item in the context menu or push “**Ctrl + V**” key in your keyboard as follows.

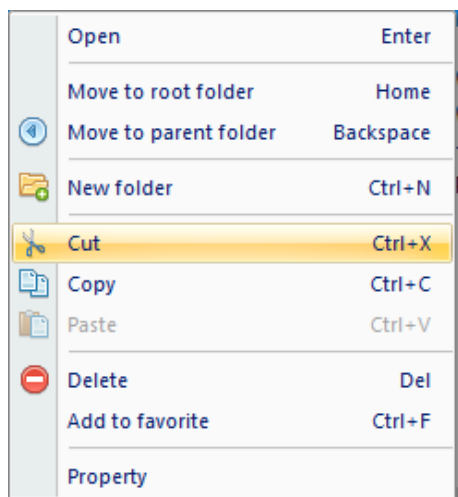


The “**STEALTH Explorer**” supports exchanging data using the clipboard between most of applications if the applications are supporting the “**OLE Data Object**” manipulation. Be aware of that “**STEALTH Explorer**” only accepts the clipboard data for manipulating folders or files.

## Cut

You can cut selected folders or files from the Desktop space or STEALTH space and save them into the clipboard.

The other ways to cut are that you can select the **“Cut”** item in the context menu or push the **“Ctrl + X”** key in your keyboard as follows.

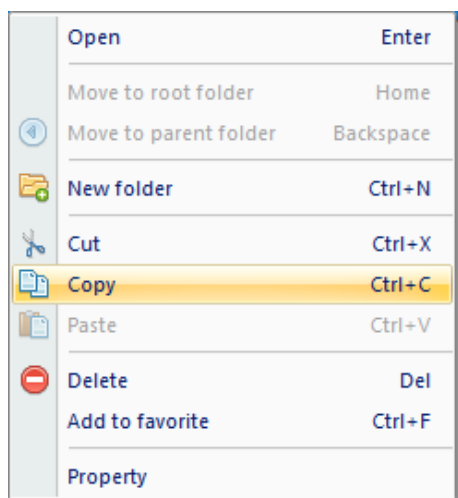


The **“STEALTH Explorer”** supports exchanging data using the clipboard between most of applications if the applications are supporting the **“OLE Data Object”** manipulation. Be aware of that **“STEALTH Explorer”** only accepts the clipboard data for manipulating folders or files.

## Copy

You can copy selected folders or files from the Desktop space or STEALTH space and save them into the clipboard.

The other ways to copy are that you can select the **“Copy”** item in the context menu or push the **“Ctrl + C”** key in your keyboard as follows.



The **“STEALTH Explorer”** supports exchanging data using the clipboard between most of applications if the

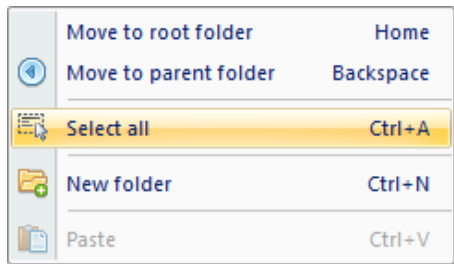


applications are supporting the “**OLE Data Object**” manipulation. Be aware of that “**STEALTH Explorer**” only accepts the clipboard data for manipulating folders or files.

## Select all .....

You can select all items in the Desktop space or STEALTH space.

The other ways to select all are that you can select the “**Select all**” item in the context menu or push the “**Ctrl + A**” key in your keyboard as follows.



# STEALTH Features

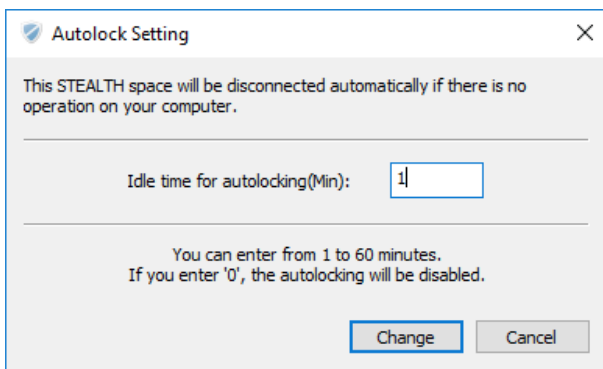
You can use STEALTH features provided by “**STEALTH Explorer**” to manage your STEALTH space by using following ribbon menus.



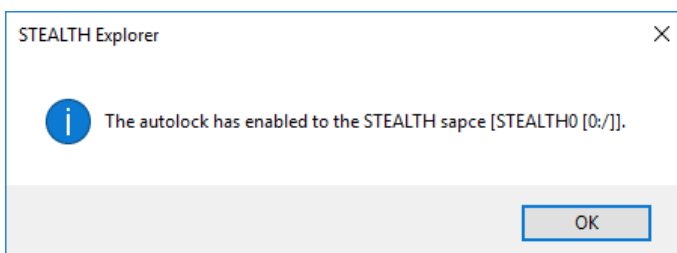
## Autolock Setting

You can configure that a connected STEALTH space will be disconnected automatically if there is no event of mouse as well as keyboard for the defined time.

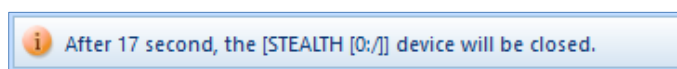
Click the “**Autolock Setting**” button so that “**STEALTH Explorer**” will display a dialog as follows.



You can set the idle time from 0 to 60. If you set the idle time as 0, the autolock feature will be disabled. Click the “**Change**” button after providing the idle time then a dialog will be displayed as follows.



The “**STEALTH Explorer**” will inform that a STEALTH space is going to be disconnected by using the “**Caption bar**” before 20 second for autolock as follows.



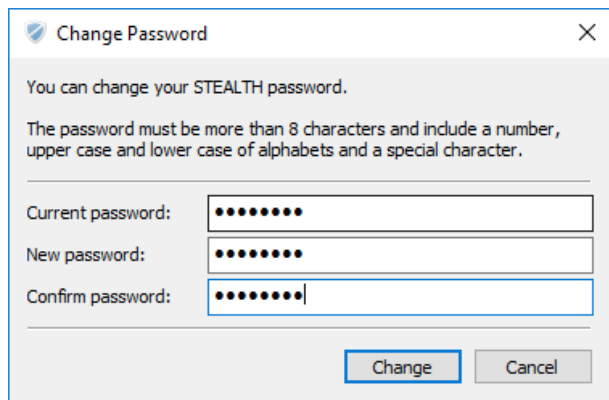
Notice: Once you change the autolock setting, the “**Digital Key**” will be updated automatically so that it is highly recommended to back up again after changing the autolock setting.

## Change Password

You can change the password of STEALTH space connected.

**Notice:** You can't use this function when you're connecting to remote Shares hosted by STEALTH File Server.

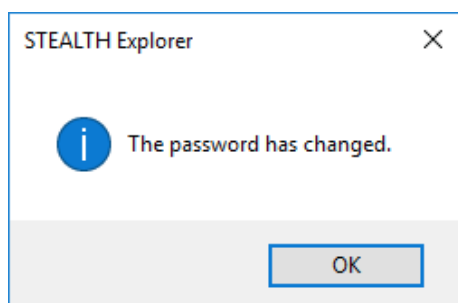
Click the **"Change Password"** button so that the **"STEALTH Explorer"** will display a dialog as follows.

A screenshot of a 'Change Password' dialog box. The title bar says 'Change Password' with a close button. The main text says 'You can change your STEALTH password.' followed by password requirements: 'The password must be more than 8 characters and include a number, upper case and lower case of alphabets and a special character.' There are three input fields: 'Current password:', 'New password:', and 'Confirm password:'. Each field contains eight dots. At the bottom, there are 'Change' and 'Cancel' buttons. The 'Change' button is highlighted with a blue border.

The password rules are as follows.

- Must different to the current password.
- Must have 1 or more alphabet capital character.
- Must have 1 or more alphabet small character.
- Must have 1 or more numeric character.
- Must have 1 or more special character.
- Minimum length must be longer than 8 characters long.
- Maximum length must be less than 64 characters long.

The following dialog will be displayed after changing the password.

A screenshot of a 'STEALTH Explorer' dialog box. The title bar says 'STEALTH Explorer' with a close button. The main area contains an information icon (a blue circle with a white 'i') and the text 'The password has changed.' At the bottom, there is an 'OK' button.

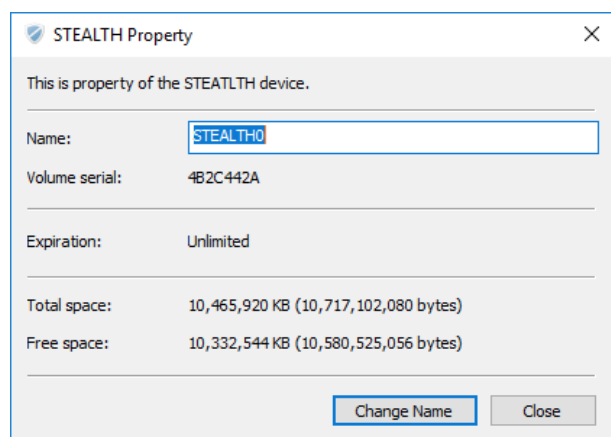
**Notice:** Once you change the password, the **"Digital Key"** will be updated automatically so that it is highly recommended to back up again after changing the password.

## STEALTH Property

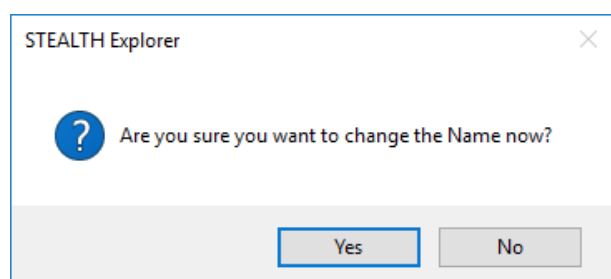
You can check property information of a STEALTH space connected and change the name if you want.

**Notice:** You can use this function only for checking properties when you're connecting to remote Shares hosted by STEALTH File Server.

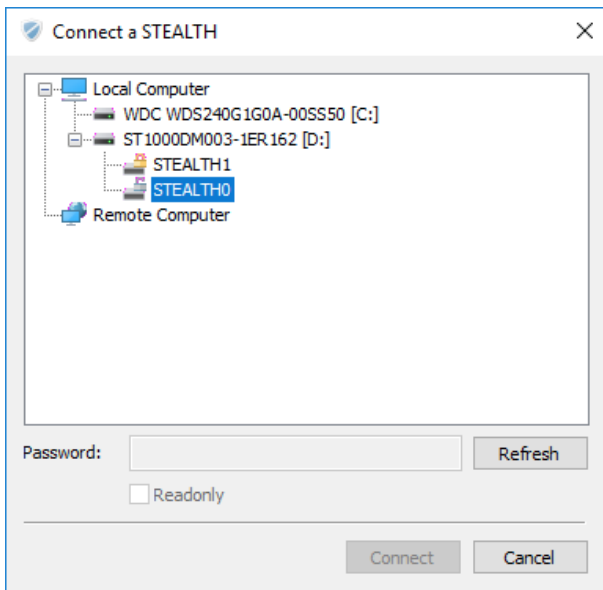
Click the **“STEALTH Property”** button so that the **“STEALTH Explorer”** will display a dialog as follows.



If you want to change the name of the STEALTH space, enter the name within 11 characters and click the **“Change Name”** button. The **“STEALTH Explorer”** will display a dialog to confirm as follows. Click the **“Yes”** button to continue.



The changed name will be shown in the **“Connect a STEALTH”** dialog as follows.

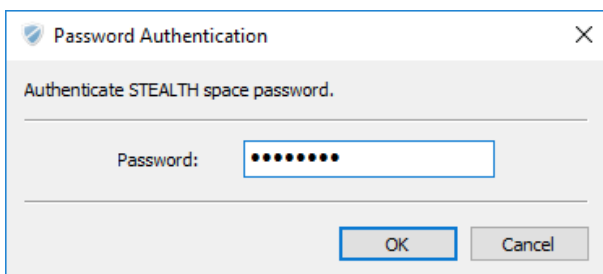


## Format STEALTH

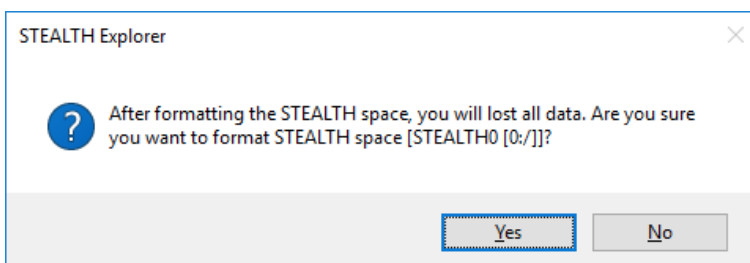
You can format and initialize a STEALTH space connected.

**Notice:** You can't use this function when you're connecting to remote Shares hosted by STEALTH File Server.

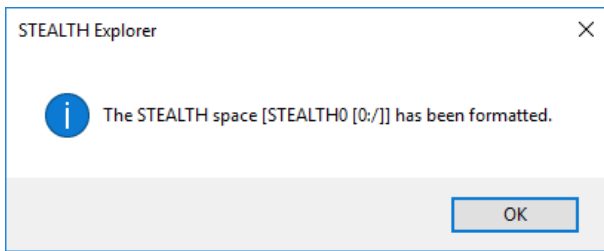
Click the **"Format STEALTH"** button so that the **"STEALTH Explorer"** will display a dialog to ask your password.



Click the **"OK"** button after providing the password so that the **"STEALTH Explorer"** will display a dialog to confirm the formatting as follows.



Click the **"Yes"** button to continue. The following dialog will be displayed after formatting a STEALTH space.



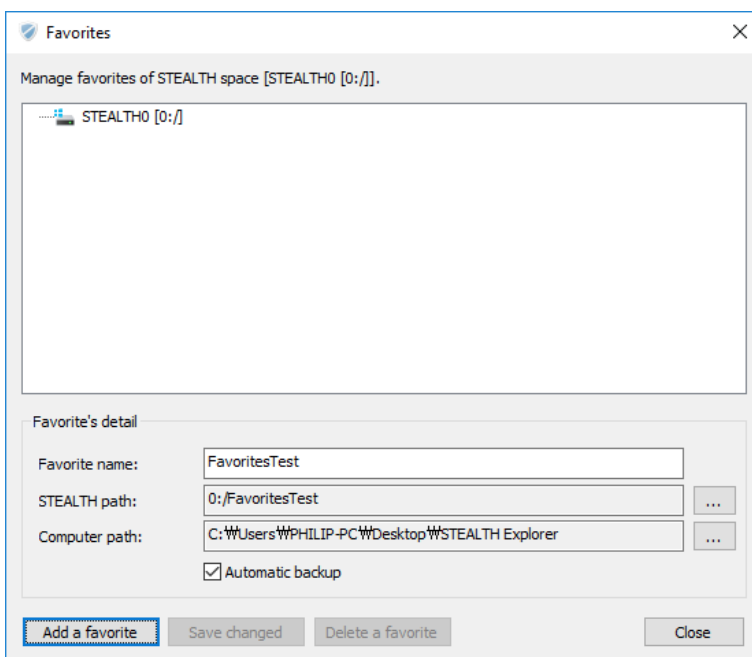
Notice: You can't recover the previous data from the STEALTH space after formatting.

## Favorites

You can register and manage favorites of a STEALTH space connected. The favorite item consists of both Desktop and STEALTH space location as a pair and automatic backup option.

If the automatic backup option has set, all changes or new items in the Desktop space will automatically back up to the STEALTH space. Be aware of that **"STEALTH Explorer"** does not delete items in the Desktop space after the automatic backup has done.

Click the **"Favorites"** button so that **"STEALTH Explorer"** will display a dialog as follows. You can add, save changes and delete favorites in the **"Favorites"** dialog.



The **"STEALTH Explorer"** saves all favorite information in a special area of STEALTH space so that your computer has no data about the favorites.

# Usages of STEALTH Explorer

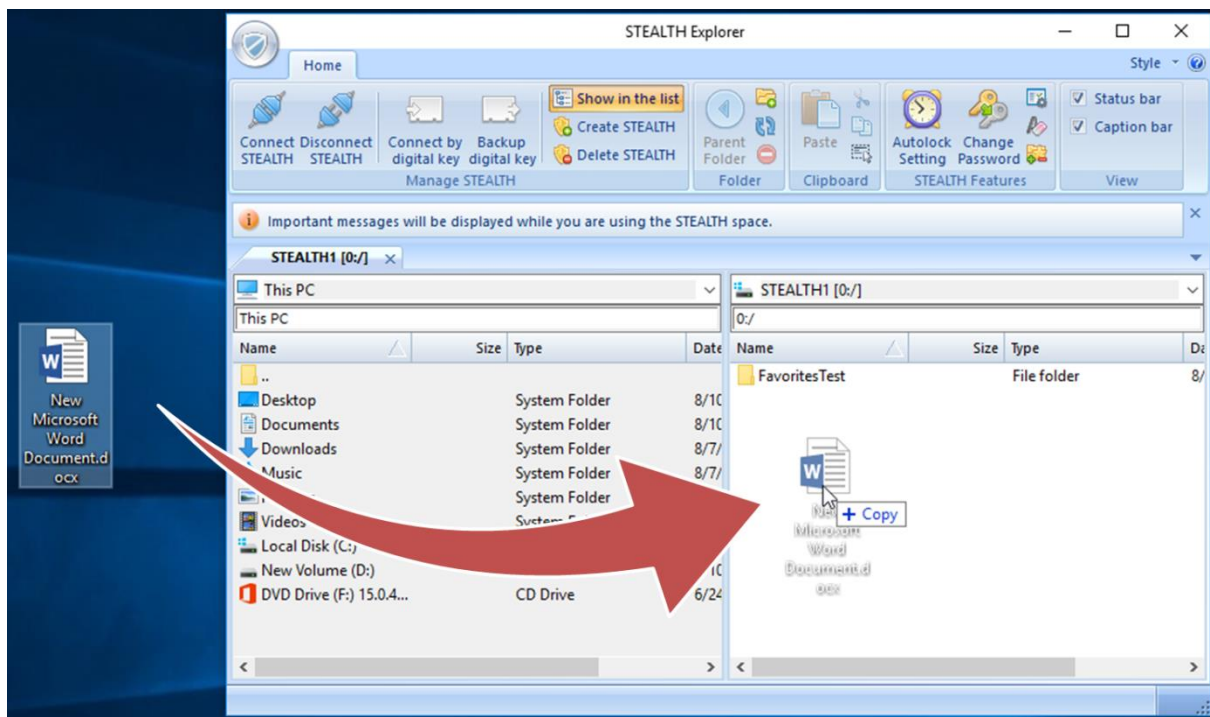
For your information, the following chapters guide you to manipulate your important data easily by using “STEALTH Explorer”.

## Drag & Drop

The “STEALTH Explorer” supports various Drag & Drop cases so that you can manipulate your folders or files more simply.

### Drag & Drop from outside to STEALTH Explorer

You can Drag & Drop folders or files from general applications including Windows Explorer to “STEALTH Explorer” easily. The default Drag & Drop operation copies selected folders or files into “STEALTH Explorer” and move them to “STEALTH Explorer” if you push the “Shift” key until dropping.

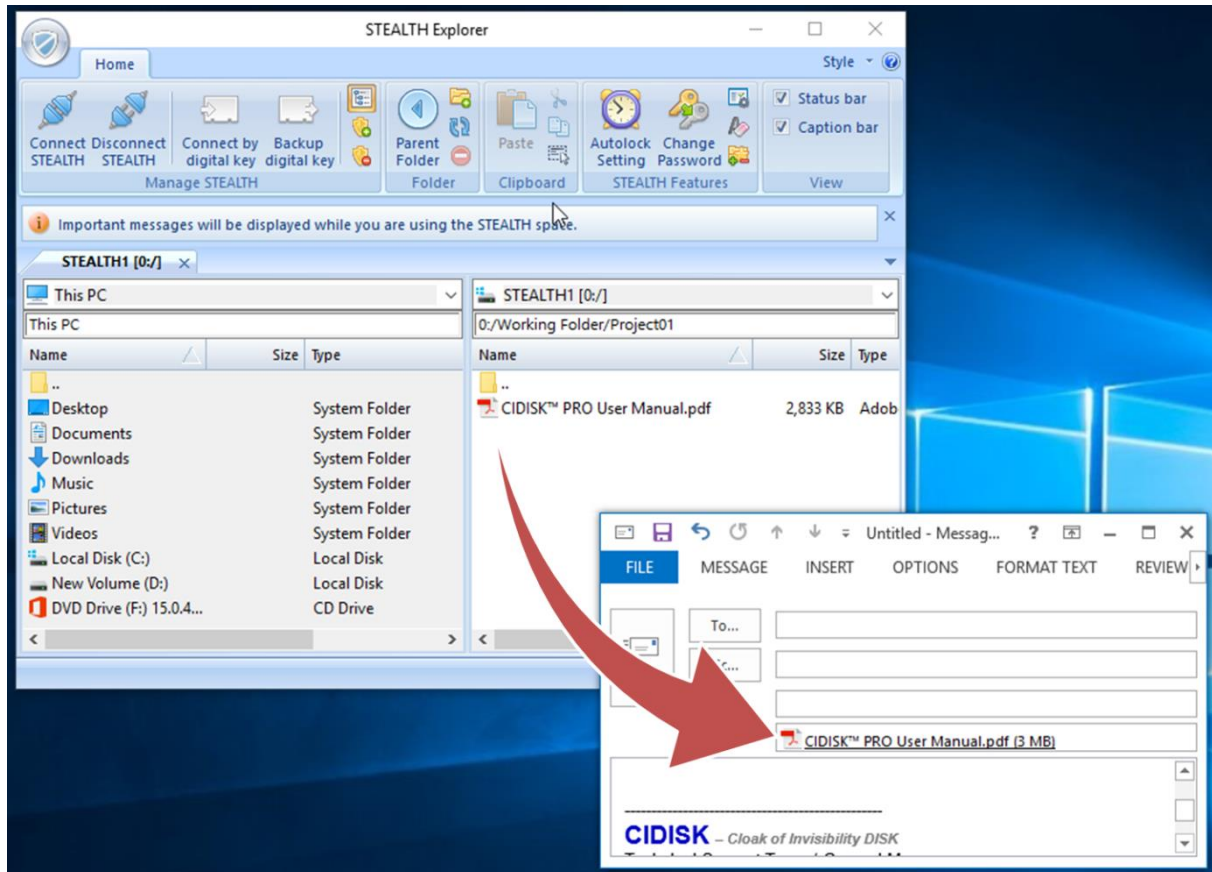


Depending on the source applications, you can only copy or move operation or can't use Drag & Drop feature. Please refer user's manual of the source application.

## Drag & Drop from STEALTH Explorer to outside

You can Drag & Drop folders or files from “**STEALTH Explorer**” to general applications including Windows Explorer easily.

For example, the following case shows that you can Drag & Drop a file from “**STEALTH Explorer**” to outside application like Microsoft Outlook.

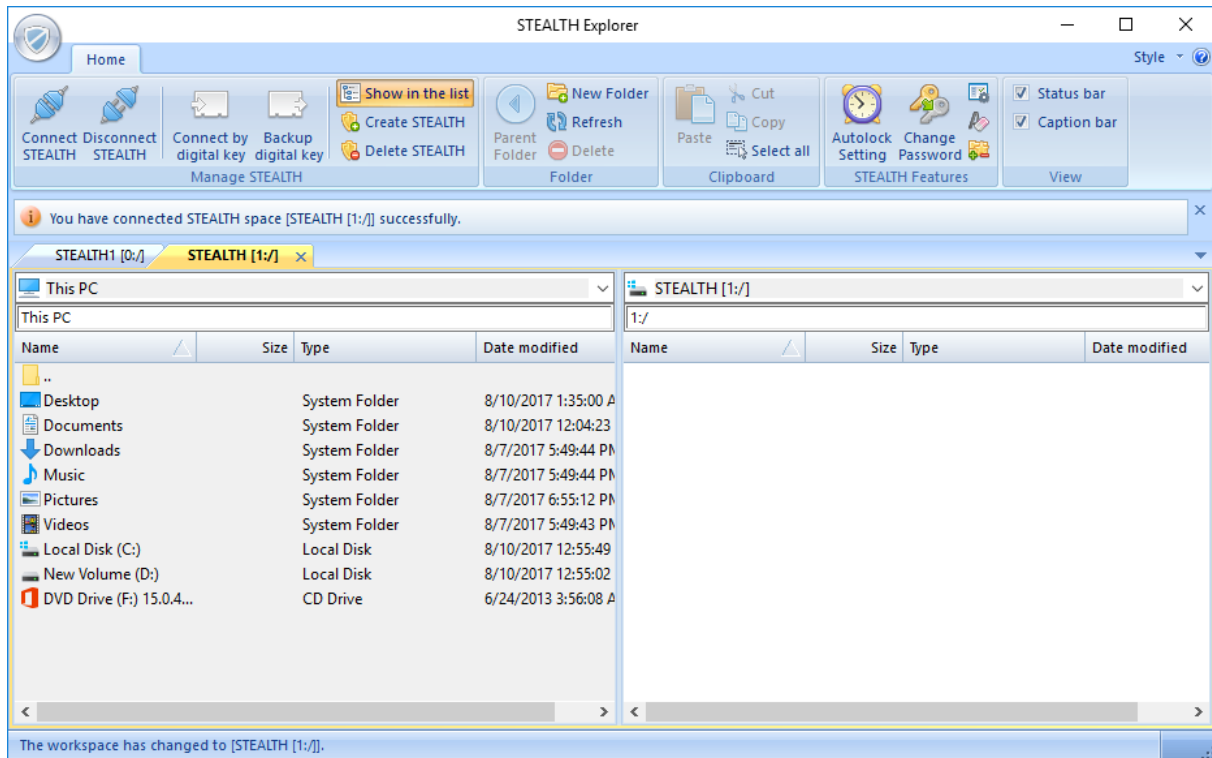


The default Drag & Drop operation copies selected folders or files into the target applications and move them to the target applications if you push the “**Shift**” key until dropping.

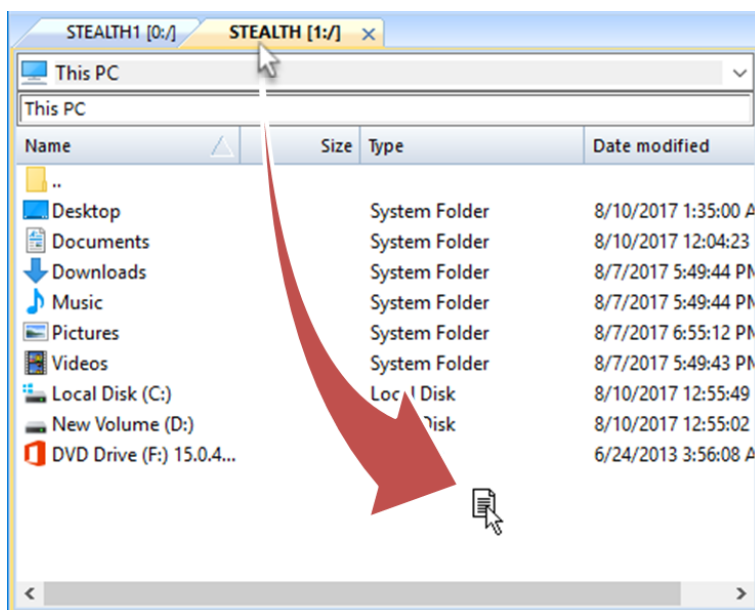


## Drag & Drop between STEALTH spaces

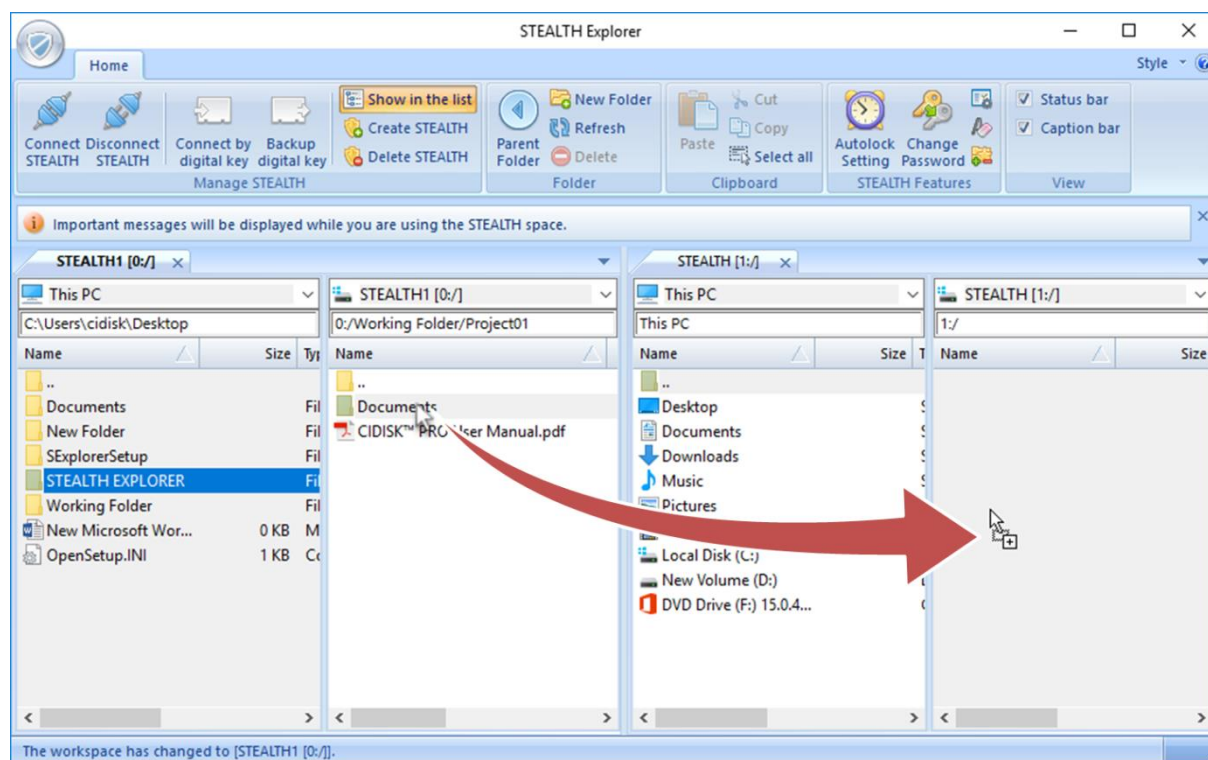
The “**STEALTH Explorer**” supports connecting several STEALTH spaces and Drag & Drop between the spaces. The following shows that “**STEALTH Explorer**” has two valid connections of different STEALTH spaces.



Drag one of tab of STEALTH space to any location in the client space as follows to change windows layout to show all STEALTH spaces.



In the changed mode, you can Drag & Drop any folders or files from one STEALTH space to another STEALTH space easily as follows.

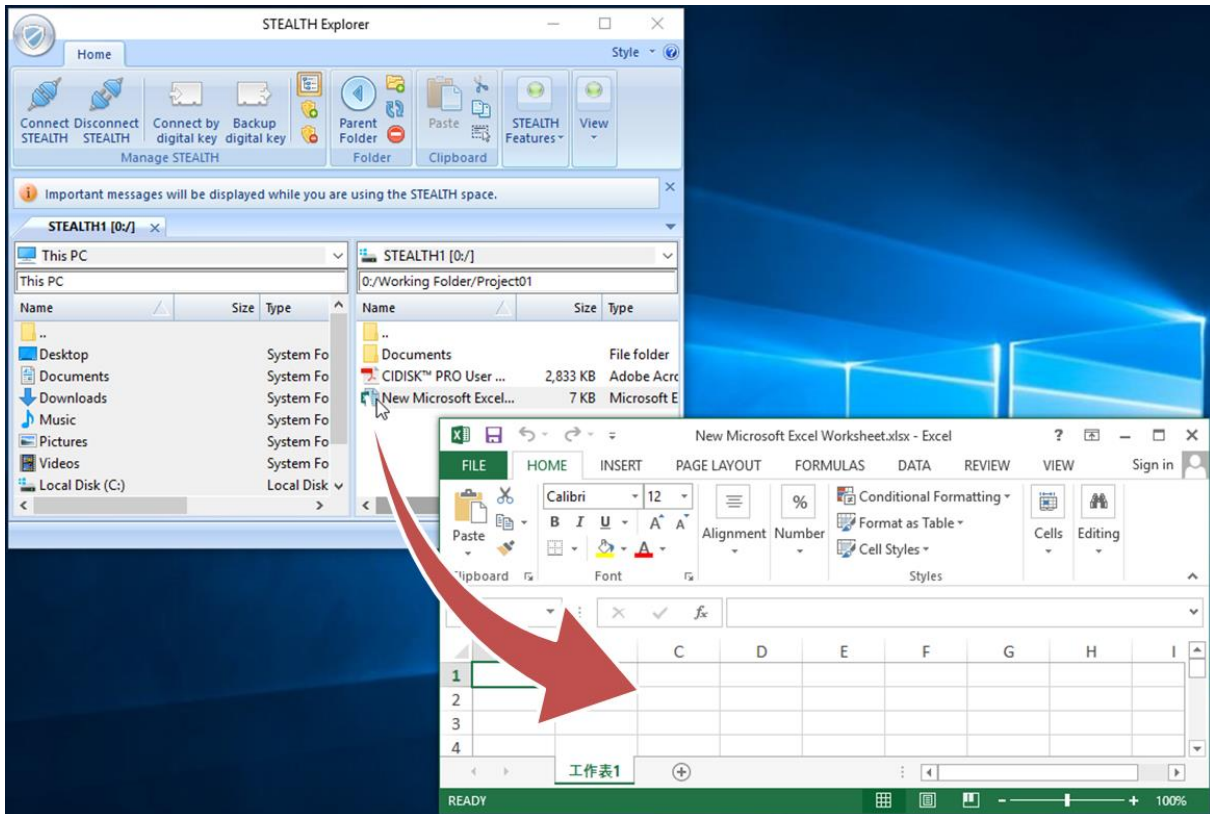


Drag & Drop makes copying or moving folders or files from one STEALTH space to another not using the Desktop space so that you can copy or move more securely.

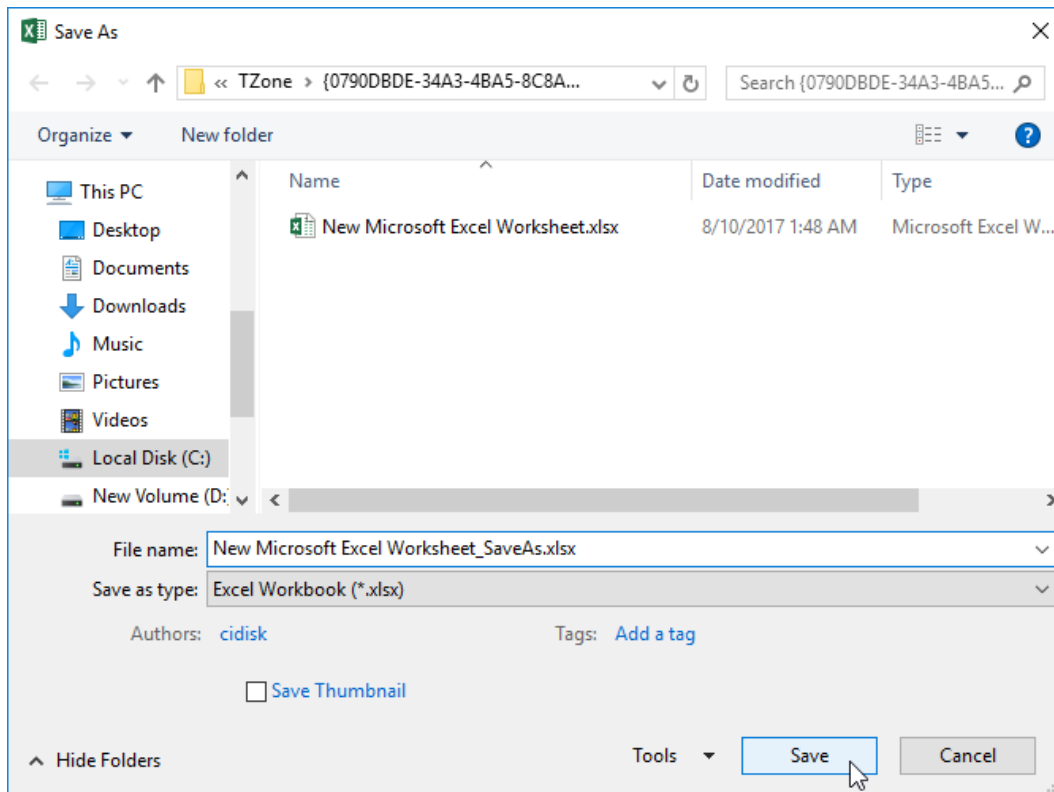
# Save As

You can modify documents directly from a STEALTH space by using **“STEALTH Explorer”**. In this situation, **“STEALTH Explorer”** makes temporary folder in your desktop and copy the document into the folder so that applications can open the document. Basically no application can see or access documents in a STEALTH space without CIDISK’s technology.

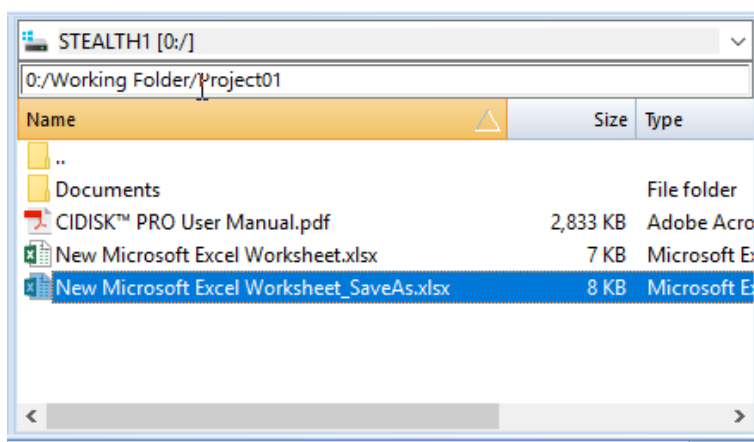
Double click on the document you want to modify then **“STEALTH Explorer”** will process and finally open the related application with the document as follows.



Save as the documents after modifying in the same folder as you opened as follows.



If a new document has been saved successfully, “**STEALTH Explorer**” will automatically back up the new document into the same folder of the original document you have opened as follows.



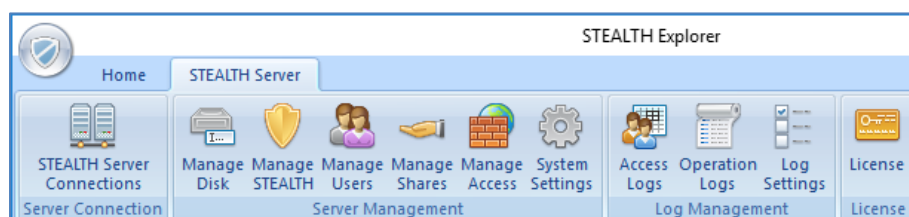
This feature allows users to modify or edit their important document in convenient ways.

# Connect STEALTH File Server

CIDISK™ PRO can be used as a management console when it is connected to a STEALTH File Server which is provided as a separate product.

**Notice:** Use STEALTH File Server's manual for installation and configuration.

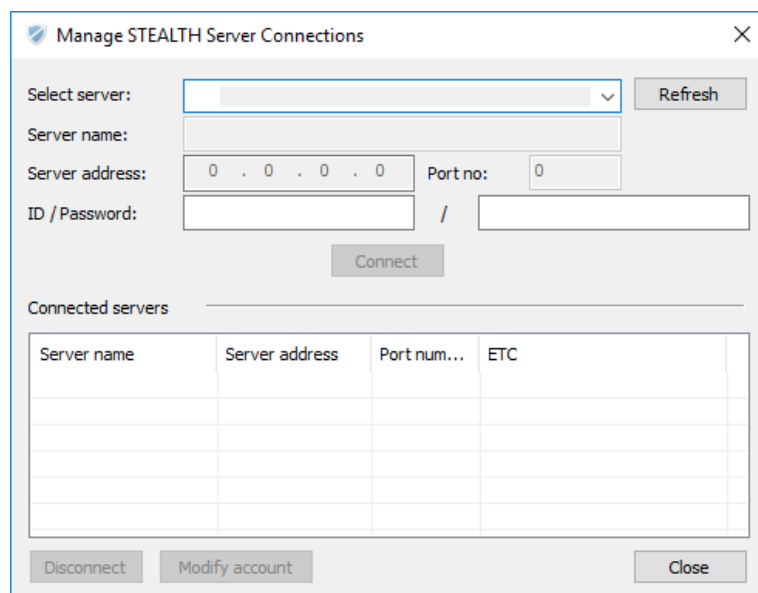
Menus for managing STEALTH Server are provided as a “**STEALTH Server**” ribbon menu group as follows.



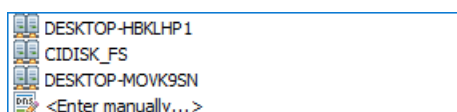
Each menu item will be updated its status depending on the connection status and login account's rights.

## STEALTH Server Connections

CIDISK™ PRO supports multiple connections to a number of servers. The following dialog will be displayed when you click this menu button.



Select a server from the “**Select server**” box which lists server names.



CIDISK™ PRO remembers and shows server names in the list those you have logged in. Also CIDISK™ PRO

shows broadcasted server name in the list if a server is running in the same network. When you select “<Enter manually...>”, you can enter Server name, Server address and Port number directly.

## Connect

The Server name, Server address and Port number will be automatically updated when you select a server in the list as follows.

Manage STEALTH Server Connections

Select server:  Refresh

Server name:

Server address:  Port no:

ID / Password:  /

Connect

Connected servers

Server name	Server address	Port num...	ETC

Disconnect Modify account Close

Click the “**Connect**” button after providing “**ID / Password**”. CIDISK™ PRO will try to connect to the server with displaying a dialog as follows. If any error happened, the details of error will be displayed in the dialog.

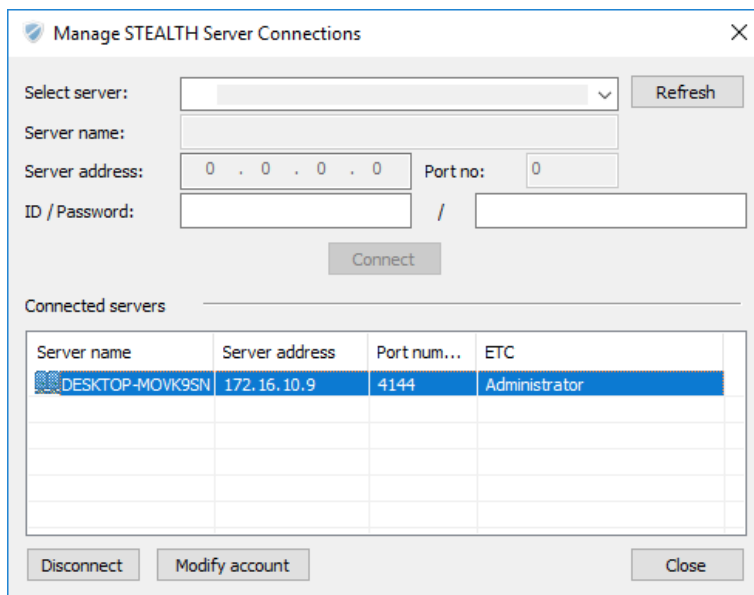
Connect to STEALTH Server

An exception has occurred while communicating with the STEALTH server.  
Please check your network condition and try again.

OK

You need to check network environments or server’s status if the connection has failed.

The connected server will be listed in the “**Connected servers**” list if the connection has succeeded as follows.



Manage STEALTH Server Connections

Select server:  Refresh

Server name:

Server address:  .  .  .  Port no:

ID / Password:  /

Connect

Connected servers

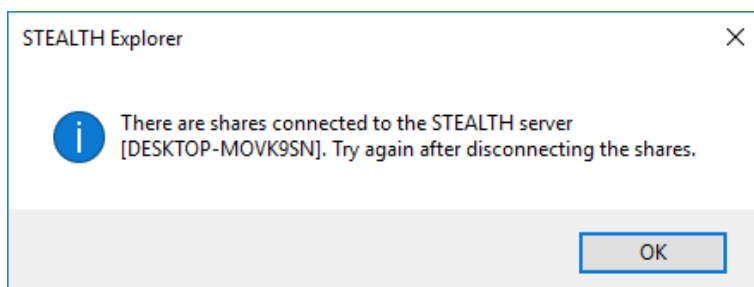
Server name	Server address	Port num...	ETC
DESKTOP-MOVK9SN	172.16.10.9	4144	Administrator

Disconnect Modify account Close

The connected server in the list will be automatically removed when the connection has broken since network failure, etc. You can additionally use the “**Disconnect**” and “**Modify account**” buttons after selecting a server in the list which has a valid connection.

## Disconnect

You can disconnect by clicking the “**Disconnect**” button after selecting a connected server in the list. If you have opened any share from the server, the following dialog will be displayed. In this case, try to disconnect again after closing the opened share.

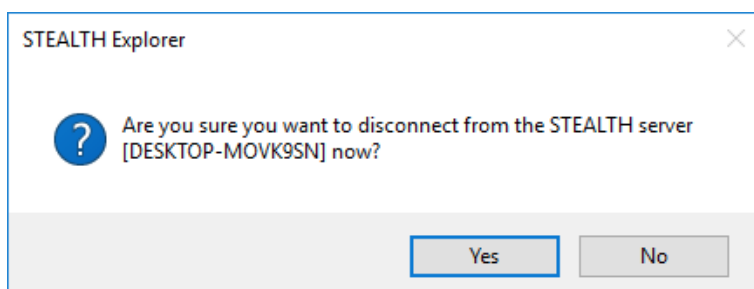


STEALTH Explorer

There are shares connected to the STEALTH server [DESKTOP-MOVK9SN]. Try again after disconnecting the shares.

OK

If there is no share opened, the following dialog will be displayed. Click the “**Yes**” button to disconnect.



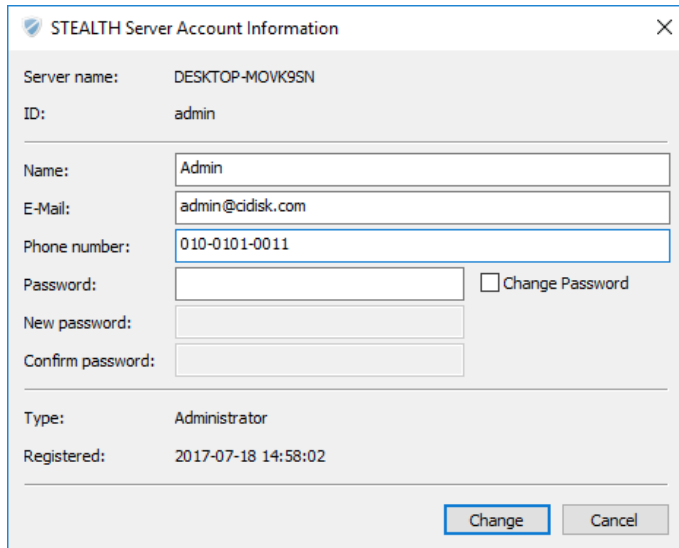
STEALTH Explorer

Are you sure you want to disconnect from the STEALTH server [DESKTOP-MOVK9SN] now?

Yes No

# Modify account

The following dialog will be displayed when you click the **“Modify account”** button after selecting a connected server in the list.

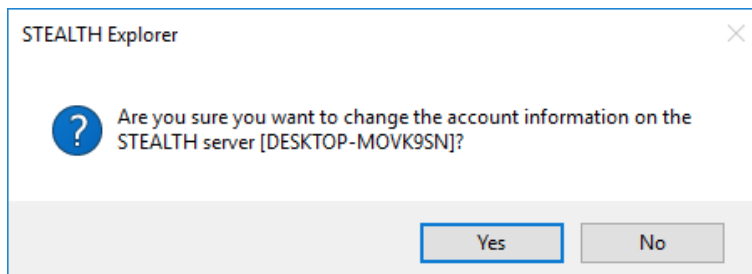


The dialog box is titled "STEALTH Server Account Information". It contains the following fields and information:

- Server name: DESKTOP-MOVK9SN
- ID: admin
- Name: Admin
- E-Mail: admin@cidisk.com
- Phone number: 010-0101-0011
- Password: (empty field) ☐ Change Password
- New password: (empty field)
- Confirm password: (empty field)
- Type: Administrator
- Registered: 2017-07-18 14:58:02

At the bottom right, there are two buttons: "Change" and "Cancel".

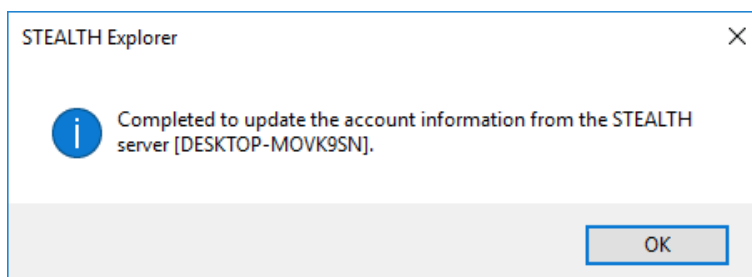
You can modify Name, E-Mail and Phone number with providing account's current password. By checking the **“Change password”** you can also change password together. Click the **“Change”** button after providing values to modify then following dialog will be displayed to confirm.



The dialog box is titled "STEALTH Explorer". It contains a question mark icon and the text: "Are you sure you want to change the account information on the STEALTH server [DESKTOP-MOVK9SN]?"

At the bottom, there are two buttons: "Yes" and "No".

The following dialog will be displayed when it completed.



The dialog box is titled "STEALTH Explorer". It contains an information icon and the text: "Completed to update the account information from the STEALTH server [DESKTOP-MOVK9SN]."

At the bottom, there is one button: "OK".

Click the **“OK”** button to complete.

**Notice:** The login account's password does not have complexity rules. Please make the password more complex to have enough security features.



# Operation Logs

CIDISK™ PRO supports management features for Operation Logs on the server and exporting logs as Excel worksheet.

**Notice:** All accounts logged on to the can use this function but normal user accounts only can search logs with his account.

The following dialog will be displayed when you click this menu button. In the “**Operation Logs**” dialog, you can check and manage Operation Logs of the STEALTH server.

No	ID	Client IP	Logged	Type	Category	Operation	Result	Parameter 1	Parameter 2	Parameter 3	Pa
17,636	admin	172.16.10.9	2017-09-24 16:27:44	Administr...	OPERATION	GET ACCESS LOGS	SUCCEED	KEYWORD =	SORT FIELD = LO...	PERIOD SEARCH ...	FU
17,635	admin	172.16.10.9	2017-09-24 16:27:02	Administr...	OPERATION	GET ACCESS LOGS	SUCCEED	KEYWORD =	SORT FIELD = LO...	PERIOD SEARCH ...	FU
17,634	admin	172.16.10.9	2017-09-24 16:26:54	Administr...	OPERATION	GET ACCESS LOGS	SUCCEED	KEYWORD =	SORT FIELD = LO...	PERIOD SEARCH ...	FU
17,633	admin	172.16.10.9	2017-09-24 15:37:36	Administr...	OPERATION	GET ACCESS LOGS	SUCCEED	KEYWORD =	SORT FIELD = LO...	PERIOD SEARCH ...	FU
17,632	admin	172.16.10.9	2017-09-24 15:34:00	Administr...	OPERATION	SET SYSTEM SETT...	SUCCEED	STEALTH PORT =...	MAX CLIENT = 100	RETRY MINUTES ...	LO
17,631	admin	172.16.10.9	2017-09-24 15:33:14	Administr...	OPERATION	GET SYSTEM SET...	SUCCEED	STEALTH PORT =...	MAX CLIENT = 100	RETRY MINUTES ...	LO
17,630	admin	172.16.10.9	2017-09-23 16:09:52	Administr...	OPERATION	GET ACL LIST	SUCCEED	RETURNED 2 ACC...			
17,629	admin	172.16.10.9	2017-09-23 16:09:49	Administr...	OPERATION	MODIFY ACL	SUCCEED	START IP = 192...	END IP = 0.0.0.0	SUBNET MASK = ...	US
17,628	admin	172.16.10.9	2017-09-23 16:07:41	Administr...	OPERATION	GET ACL LIST	SUCCEED	RETURNED 2 ACC...			
17,627	admin	172.16.10.9	2017-09-23 16:07:37	Administr...	OPERATION	MODIFY ACL	SUCCEED	START IP = 192...	END IP = 0.0.0.0	SUBNET MASK = ...	US
17,626	admin	172.16.10.9	2017-09-23 16:06:54	Administr...	OPERATION	GET ACL LIST	SUCCEED	RETURNED 2 ACC...			
17,625	admin	172.16.10.9	2017-09-23 15:58:29	Administr...	OPERATION	DELETE ACL	SUCCEED	START IP = 192...	END IP = 192.16...	SUBNET MASK = ...	US
17,624	admin	172.16.10.9	2017-09-23 15:55:34	Administr...	OPERATION	MODIFY ACL	SUCCEED	START IP = 192...	END IP = 192.16...	SUBNET MASK = ...	US
17,623	admin	172.16.10.9	2017-09-23 15:47:20	Administr...	OPERATION	GET ACL LIST	SUCCEED	RETURNED 3 ACC...			
17,622	admin	172.16.10.9	2017-09-23 15:46:25	Administr...	OPERATION	ADD ACL	SUCCEED	START IP = 192...	END IP = 192.16...	SUBNET MASK = ...	US
17,621	admin	172.16.10.9	2017-09-23 15:37:16	Administr...	OPERATION	GET ACL LIST	SUCCEED	RETURNED 2 ACC...			

- Select server

You can select a STEALTH server which you have logged. Recent logs will be displayed with 20 records when you select a server.

## Search

You can search by keyword. The keyword will be used for querying LIKE search of ID, Client IP, Operation, Result and Parameters.

- Sort

You can search with sorting options for the “**Logged**” and “**Client IP**” fields. The default sort option is for descending search of the “**Logged**” field.

- Period

You can define date information for the “**Logged**” field to search.

## Category

You can define the Category from “**All**”, “**Normal Operation**” and “**File Operation**”.

- Operation

You can define a type of detail operations to search. The detail operations are as following.

Operation	Explain	ETC
<b>Normal Operation</b>		
ADMIN LOGIN	Administrator's login	Administrator only
USER LOGIN	Normal user's login	
ADMIN LOGOUT	Administrator's logout	Administrator only
USER LOGOUT	Normal user's logout	
ADMIN LOGOUT BY SYSTEM	Administrator's logout by system	Administrator only
USER LOGOUT BY SYSTEM	Normal user's logout by system	
UPDATE ACCOUNT	Modify logged in account information	
GET DISK INFO	Request disk information of the server	
GET AREA INFO	Request STEALTH space information of the server	
GET PARTITION INFO	Request partition information of the server	
QUERY SHRINK MAX	Request shrinkable space of a partition on the server	Administrator only
SHRINK PARTITION	Request shrinking a partition on the server	Administrator only
CREATE PARTITION	Request creating a partition on the server	Administrator only
DELETE PARTITION	Request deleting a partition on the server	Administrator only
GET SHARE LIST	Request share information of the server	Administrator only
ADD SHARE	Request adding a share on the server	Administrator only
MODIFY SHARE	Request modifying a share on the server	Administrator only
DELETE SHARE	Request deleting a share on the server	Administrator only
GET USER SHARE LIST	Request share information accessible by user accounts	
CONNECT SHARE	Request connecting to a share	
DISCONNECT SHARE	Request disconnecting from a share	
FORCE DISCONNECT SHARE	Request disconnecting from a share by system	Administrator only
GET SHARE USER LIST	Request accessible user accounts by shares	Administrator only
ADD SHARE USER	Request assign user accounts to a share	Administrator only
MODIFY SHARE USER	Request modifying account privilege on a share	Administrator only
DELETE SHARE USER	Request releasing user accounts from a share	Administrator only
GET ACL LIST	Request Access Control Policy	Administrator only
ADD ACL	Request adding a Access Control Policy	Administrator only
MODIFY ACL	Request modifying a Access Control Policy	Administrator only
DELETE ACL	Request deleting a Access Control Policy	Administrator only
GET USER LIST	Request user accounts	Administrator only
CHECK ID DUPLICATE	Request checking user account's duplication	Administrator only
ADD USER	Request adding a user account	Administrator only
MODIFY USER	Request modifying a user account	Administrator only
DELETE USER	Request deleting a user account	Administrator only
CHECK PASSWORD	Request checking password of a STEALTH space	Administrator only
CREATE STEALTH	Request creating a STEALTH space	Administrator only
RENAME STEALTH	Request renaming a STEALTH space	Administrator only
REMOVE STEALTH	Request deleting a STEALTH space	Administrator only
FORMAT STEALTH	Request formatting a STEALTH space	Administrator only
MOUNT STEALTH	Request connecting to a STEALTH space	Administrator only
UNMOUNT STEALTH	Request disconnecting from a STEALTH space	Administrator only
STEALTH PROPERTY	Request querying property of a STEALTH space	Administrator only
CHANGE PASSWORD	Request changing password of a STEALTH space	Administrator only
GET ACCESS LOG	Request Access Logs	Administrator only
GET OPERATION LOGS	Request Operation Logs	Administrator only
GET SYSTEM SETTINGS	Request System Settings	Administrator only
SET SYSTEM SETTINGS	Request changing the System Settings	Administrator only
GET AUTO CONNECT FLAG	Request checking automatic connecting option	Administrator only
GET LOG SETTINGS	Request Log Settings	Administrator only
SET LOG SETTINGS	Request changing the Log Settings	Administrator only
<b>File Operation</b>		
FS GET AUTOLOCK	Request Autolock Settings	
FS SET AUTOLOCK	Request changing the Autolock Settings	
FS GET FAVORITES	Request Favorites	
FS SAVE FAVORITES	Request saving the Favorites	
FS OPEN FILE	Request opening a file	
FS OPEN DIR	Request opening a directory	
FS WRITE	Request writing data to a file	
FS READ	Request reading data from a file	
FS RENAME	Request renaming a file or directory	
FS UTIME	Request changing attributes of a file or directory	
FS READ DIR	Request read a child files or directory of a directory	
FS ENUM DIR	Request child files or directories from a directory	
FS UNLINK	Request unlink a file or directory	
FS MKDIR	Request creating a directory	
FS CLOSE	Request closing a file	

FS CLOSE DIR	Request closing a directory	
FS STAT	Request attributes of a file or directory	
FS GET SPACE	Request space information of a STEALTH space	

- Records per Page

You can define number of records to display for searching results. The default value is 20 records and the maximum value is 100 records.

- Total

It will display number of total records resulted by the search.

- Move to

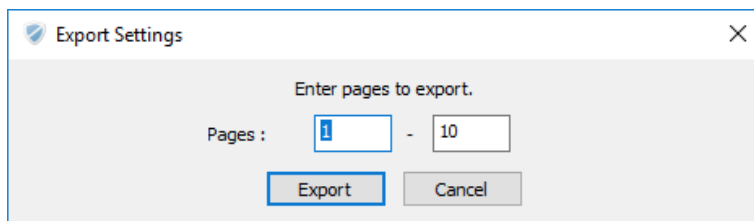
You can see number of total pages and enter page number to move directly.

- Move buttons

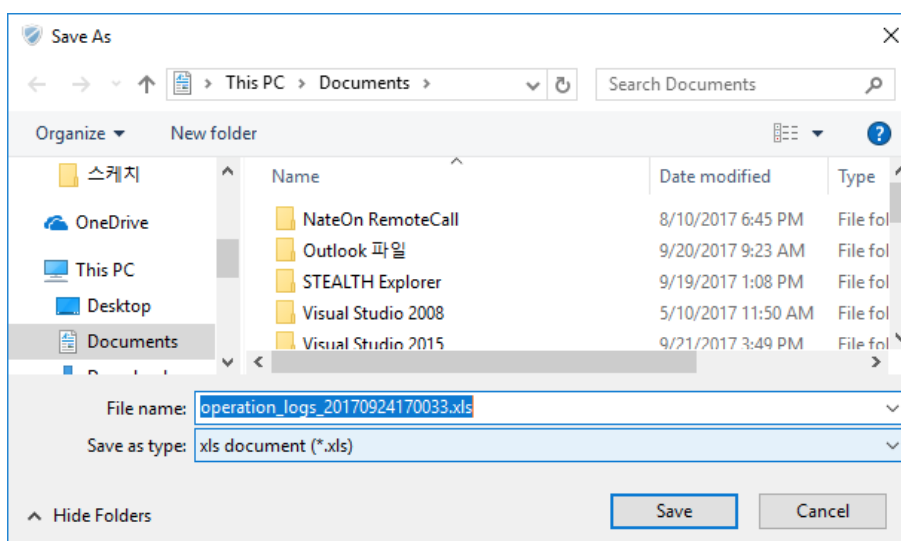
You can use the “|<<”, “<”, “>” and “>>|” buttons to move the page.

## Export Logs to Excel Document

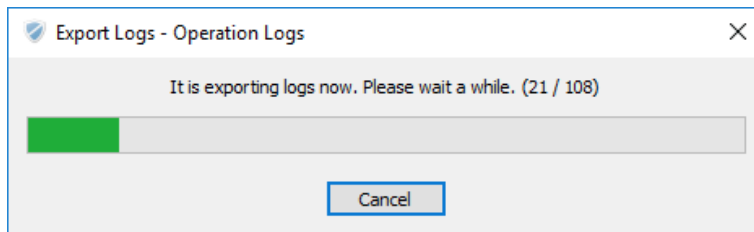
You can export search results to an Excel document. Click the “**Export Logs to Excel Document**” button after searching. The following dialog will be displayed.



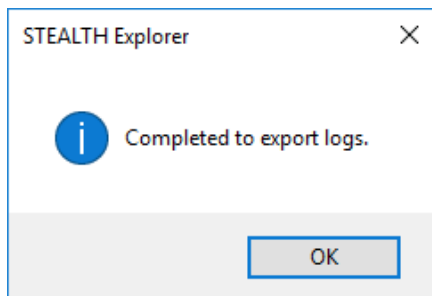
You can define pages to export and click the “**Export**” button. The following dialog will be displayed and ask you to define file path to save. The default file name has “**operation\_logs\_YYYYmmddHHMMSS.xls**” format and also you can change the file name. Click the “**Save**” button to continue.



The following dialog will be displayed and show exporting progress. Please wait for completing or click the **“Cancel”** button to cancel.



The following dialog will be displayed when it completed.



Click the **“OK”** button to complete.

Notice: The file you have defined will be deleted if you cancel the exporting.

# Contact

If you have any problem to use the CIDISK™ Pro, please contact to followings.

- E-Mail: [cidisk@cidisk.com](mailto:cidisk@cidisk.com)
- Phone: +82-70-7553-2646